



THE PRO-LINE ADVANTAGE

All Pro-Line boats, regardless of size, are designed tough and built tough to give an owner confidence. The hulls are traditionally hand laid fiberglass, with molded inner-liners, mechanical steering, through-bolted hardware, foam flotation, and all stainless hardware. They are better equipped than they need to be, but not loaded down with extras. And the result is a handsome, well-designed fishing boat, easy to maintain and easy to own. This is the Pro-Line advantage.



21 Walkaround



23 Walkaround



28 Offshore Walkaround



21 Walkaround

The 21 Walkaround, left, is the smallest of the Pro-Line Walkarounds, but it has an army of believers among fishermen everywhere.

The 21 boasts the same deep, wide walkarounds, the same airy cabin, the same deep-V hull design, and the same performance characteristics and rugged dependability as the larger Pro-Lines.

Standards are impressive, with outboard power, sterndrive and Sea Drive options to 205-hp, insuring speeds of 38 mph.

23 Walkaround

New exciting standards and a dazzling new cabin interior combine to make the 23 Walkaround a logical choice for owners seeking a smaller fishing cruiser with big boat features. The robust 23-footer with its legendary offshore performance offers just about every design feature the fisherman needs: The safety and efficiency of deep walkarounds, a wide open cockpit, a snug, airy cabin, and a responsive, easy to maintain deep-V hull.

Included in the base price are Bimini top, recessed rod storage, twin helm seats, lockable teak cabin door, and bunk cushions.

Also standard are easy access fuse panels, and a new double-sized livewell. The cabin interior on the "23" is an achievement in dramatic upbeat styling.

Pro-Line Plus-2 configuration is standard with a single 235-hp mill as maximum. Sterndrive power to 205-hp and V-6 OMC Sea Drive are available. Speeds to 40 mph.





25 Offshore 20 Walkaround

Latest model from the boards of Pro-Line engineering, the 25 Offshore Walkaround was designed to fill the gap between the "23" and the "28", with the same deep, wide walkarounds for boat handling safety and efficiency.

But the "25" is in a class by itself, and early testing demonstrated conclusively the outstanding performance characteristics of her design.

And standard features? Check these: A large stand-up cabin in rich, blue-grey

hues with accents of aluminum and teak, just right 166-gallon fuel capacity, hydraulic steering and Bennett Trim Tabs. Also standard for the 25 Offshore Walkaround are folding Bimini top, Porta Potti, recessed rod storage, stainless steel hardware and three large fish boxes.

For power there are either single or twin outboards to 400-hp on the Pro-Line Plus-2 drives, single or twin stern-drives to 205-hp, or single V-8 OMC Sea Drives. Speeds from an easy 34 to a solid 45 mph.



28 Offshore Walkaround Hard Top









28 Offshore 28 Walkaround

The 28 Offshore Walkaround, queen of the Pro-Line fleet, measures 28 feet in length overall, which doesn't even begin to tell the story. This is a huge 28-footer with big, deep walkarounds for maximum safety and comfort, big 10'6" beam that spawns a full-sized cabin with 6'3" headroom and a stand-up head. In addition, the "28" features a whopping 225 gallons of fuel, hydraulic steering, and Bennett Trim Tabs, all standard.

Everything on the 28 Offshore Walkaround is big. The transom sports a six-foot long fishbox that drains overboard, and beneath the king-sized cockpit there are two additional 50-gallon fishboxes. Stowage is abundant throughout the craft.

A Pro-Line cabin is an achievement in dramatic, upbeat styling that features rich, blue-grey hues, accents of aluminum and teak, and removeable table.

Other standards include a sink with 20-gallon fresh water system, built-in ice box, all stainless hardware, Bimini top, tackle cabinet and recessed rod storage.

And rest assured the 28 Offshore Walkaround has the same proven dependable, rugged hull as the other Pro-Line deep-V designs.

Power options include OMC Sea Drives, sterndrives, or outboards utilizing the Pro-Line Plus-2 configuration and topping out at twin 235's. Speeds of 40-plus mph are completely realistic.

OPTIONAL EQUIPMENT Center Console and Walkaround

1. Rod Holders
2. Side and Aft Curtains-(W/A)
3. Captains' Chairs
4. Flip-flop Seat - (C/C)
5. Grab Rail - (C/C)
6. Forward Storm Canvas-(C/C)
7. Electric Horn
8. Half Dive Platform
9. Bimini Top-(C/C)
10. Teak Bow Pulpit

Other Optional Equipment

Hard Top
Live Well Aerator
Marine Head - Holding
Lift Kit
86 Qt. Cooler Seat
Windshield Wiper
Electric Fuel Gauge
Dual Steering
Hydraulic Steering
Bow Cushions
Ped. Seat Rain Covers
Cockpit Lighting
Cabin Light
Cabin Door Hatch
Lure Cabinet

Contact your local dealer for
additional options available.



SPECIFICATIONS

	17	20	21	23	25	28
Outboard						
Max. H.P.	120	140	200	235	400	470
Stern Drive H.P.	N/A	N/A	140/175/205	175/205	S-335 T-205	S-335 T-205
Plus 2 System (25")	N.A.	Available	Available	Standard	Standard	Standard
Sea Drive	V-4	V-4	V-4	V-6	S-V6/V8 T-V4/V6	Twin V-6
Fuel Capacity						
Gallons	30	55	70	90	166	225
Hull Design	Modified-V	Modified-V	Deep-V	Deep-V	Deep-V	Deep-V
Length	17'	20'	20'6"	23'	25'	28'
Beam	7'8"	7'8"	8'	8'	9'10"	10'6"
Weight	Outboard Models Only					
Center Console	1,500 lbs.	1,800 lbs.	2,270 lbs.	2,590 lbs.	N/A	N/A
Walkaround	N/A	N/A	2,385 lbs.	2,690 lbs.	4,700 lbs.	5,500 lbs.

In keeping with Pro-Line's policy of continuous improvements on all products, we reserve the right to change specifications without notice. Some items displayed on boats are optional equipment, and not all items shown are available on all boats. Contact your dealer for complete warranty information.



P.O. Box 1348
Crystal River, Florida 32629
(904) 795-4111





THE PRO-LINE ADVANTAGE

All Pro-Line boats, regardless of size, are designed tough and built tough to give an owner confidence. The hulls are traditionally hand laid fiberglass, with molded inner-liners, mechanical steering, through-bolted hardware, foam flotation, and all stainless hardware. They are better equipped than they need to be, but not loaded down with extras. And the result is a handsome, well-designed fishing boat, easy to maintain and easy to own. This is the Pro-Line advantage.



17 Sportsman



20 Sportsman



21 Sportsman

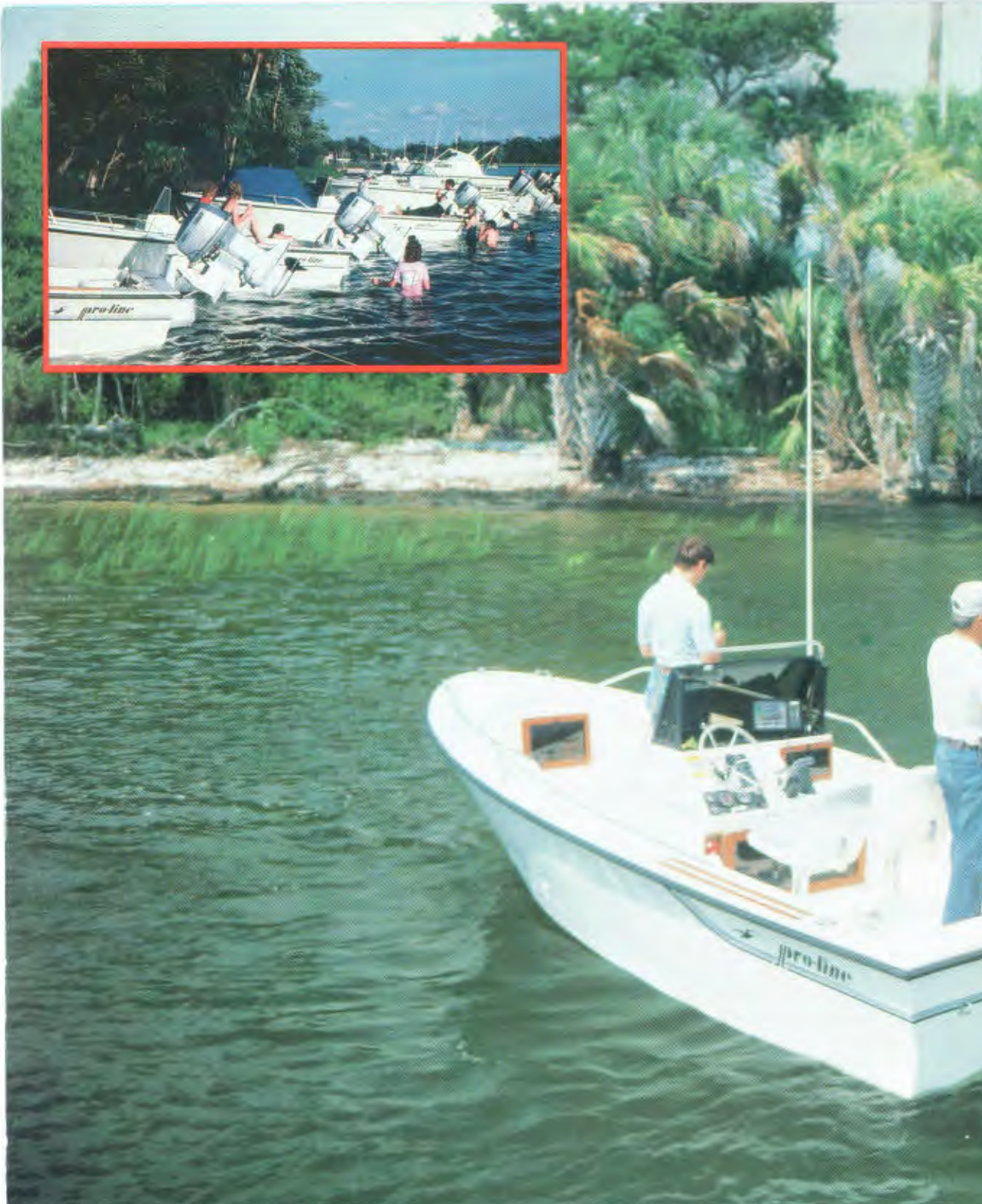
17 Sportsman

Smallest member of the "Pro" family, the 17 Sportsman packs the same muscle and offers the same sea-keeping qualities as its larger kin. Already famed for its wider transom and a stable, smooth, drier ride, the 17 now boasts new standards that make it an outstanding value.

The handsome center console sports a radio cabinet, sliding plexiglass doors below the console, casting platform forward, tinted windshield, fishbox and livewell, all-stainless steel hardware including bow rails, easy access fuse panels, the famed Pro-Line destroyer wheel, and 30 gallons of fuel for long cruising.

The NMMA/certified 17-footer will handle a range of outboard power from 70- to 120-hp and speeds to 40 mph.

A lot of fishing boat and a lot of Pro-Line has been packed into 17 feet.



20 Sportsman

With its handsome bow and wide beefy stern, the 20 Sportsman represents the ultimate effort by Pro-Line engineers to create the perfect mid-range fishing boat.

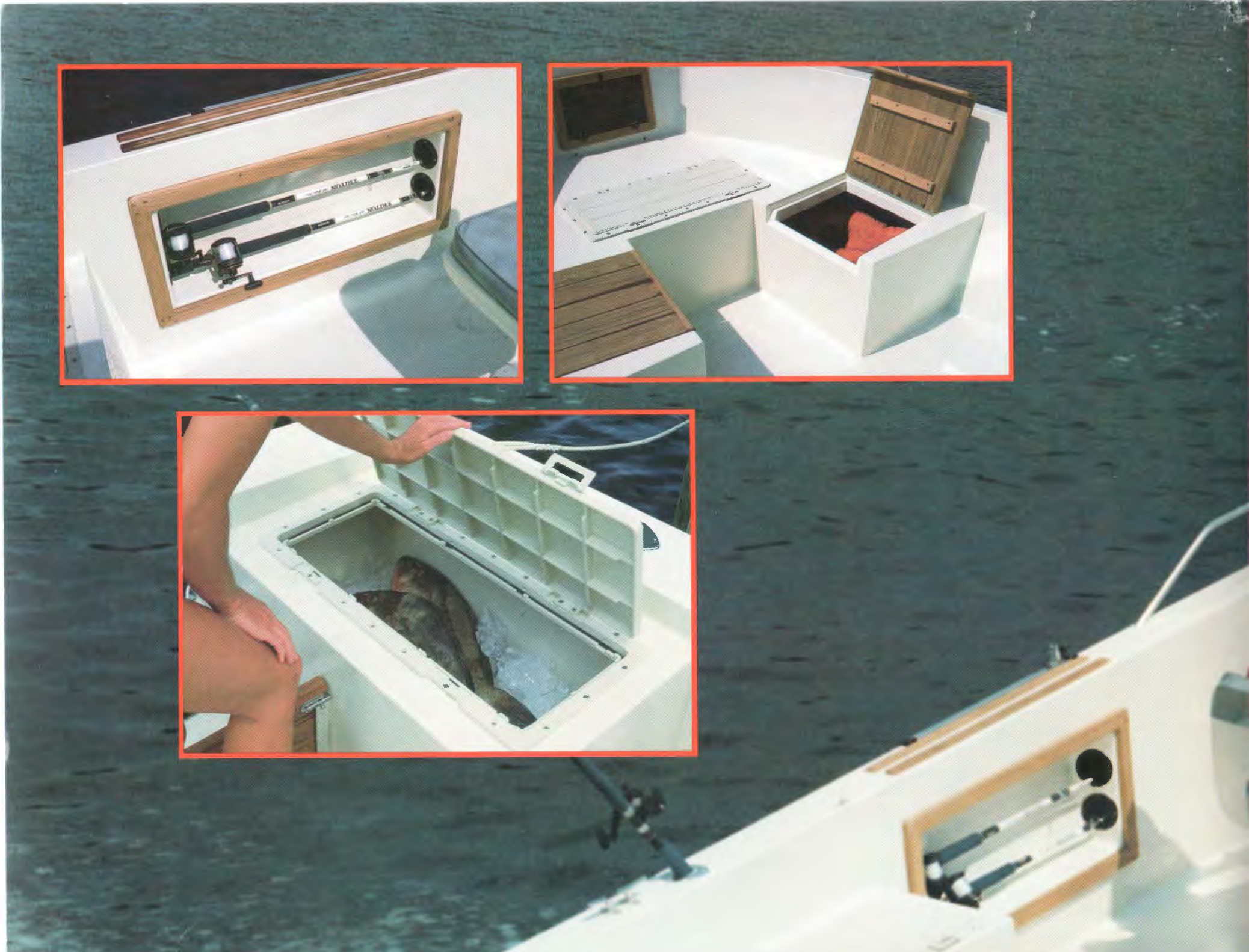
The rugged 20-footer, due to its modified V-hull, is at home offshore, but it's equally efficient when it comes time to work the flats.

All the features one would expect in a craft so sophisticated are present in the Pro-20. All hardware is stainless, and the storage is max. The latter includes two lockers aft, one an 85 quart fish box or livewell, the other for battery and gear. Under the console, excellent stowage harbors radio and electronic equipment, and a large storage compartment dominates the space under the casting platform forward.

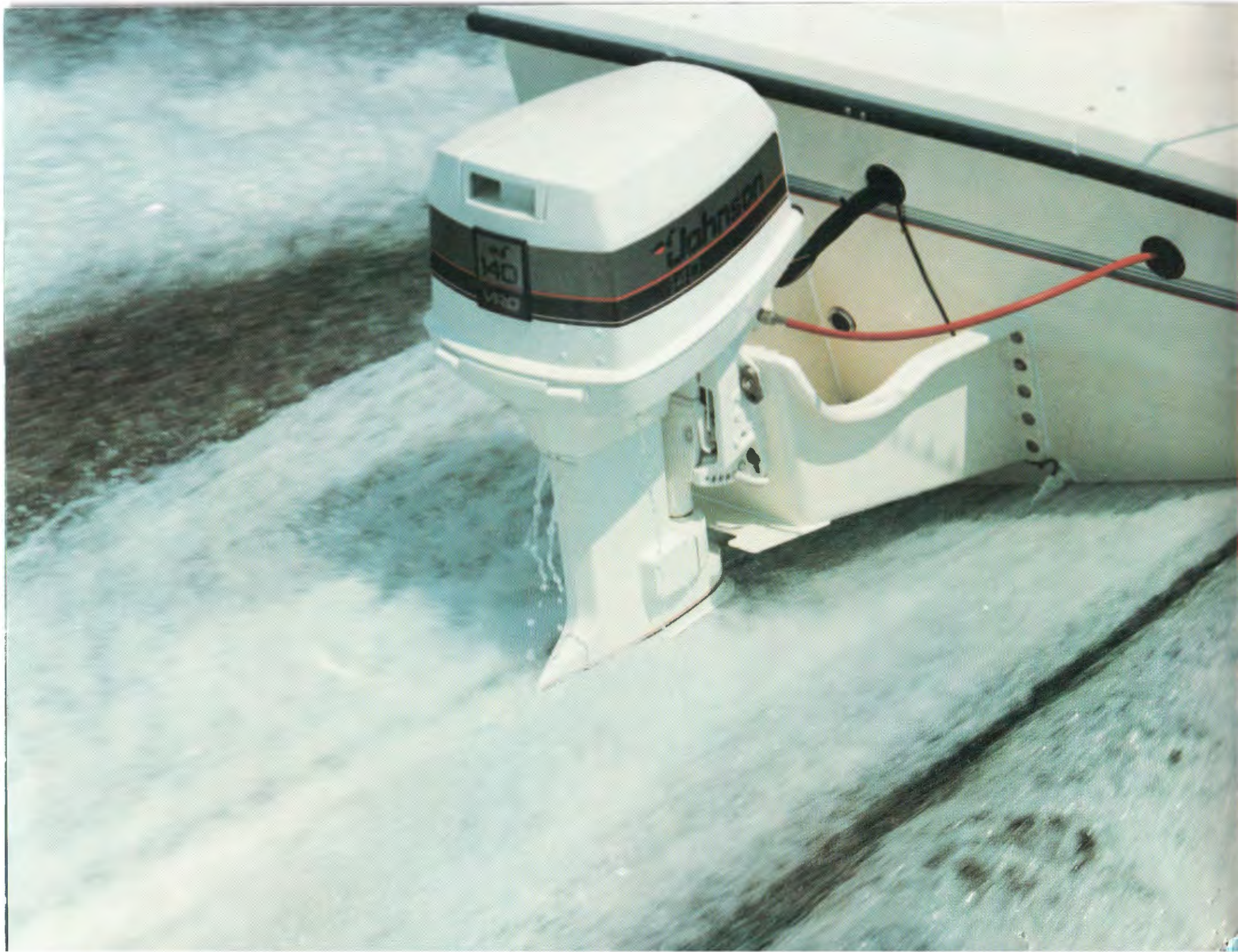
Other standards include bow rails, all-stainless hardware, twin helm seats, recessed rod storage, and extra-large teak step pads. The Pro-Line destroyer wheel is standard, as are the easy access fuse panels.

The 20-footer carries 55 gallons for outboard power to 140-hp and speeds to 40 mph.











21 Sportsman

For the skipper who seeks maximum reliability and economy in a fishing boat, the all-new 21 Sportsman is a standout. Endowed with the soft ride and rugged dependability of a deep-V hull, the 21 is designed to be tough offshore.

The Pro-21 is the smallest deep-V in the lineup of famed fishing boats from Pro-Line, but no important feature has been overlooked: A mile-long list of standards includes a Bimini top, recessed rod storage, bow rails, all-stainless steel hardware, easily accessible fuse panel, twin helm seats, drink holders, and battery enclosure.

Other features include two storage lockers aft, one being oversized as a fish box or for bait, three good-sized compartments under the casting platform forward, and there is room behind sliding plexiglass doors under the console for all manner of radio and electronics gear. The Pro-Line destroyer wheel is always standard.

In the outboard configuration, the Pro-21 will accommodate up to 200-hp, but 115- to 150-hp is considered optimum and will deliver speeds to 38 mph.

Stern-drive power is available in various sizes: 165-, 175-, 180-, and 205-hp. The 21-footer will accommodate V-4 OMC Sea Drive.

The Pro-Line 21 is a lot of fishing boat, because it's the product of a lot of people at Pro-Line who fish as hard and as often as you do.

OPTIONAL EQUIPMENT

Center Console and Walkaround

1. Rod Holders
2. Side and Aft Curtains-(W/A)
3. Captains' Chairs
4. Flip-flop Seat - (C/C)
5. Grab Rail - (C/C)
6. Forward Storm Canvas-(C/C)
7. Electric Horn
8. Half Dive Platform
9. Bimini Top-(C/C)
10. Teak Bow Pulpit

Other Optional Equipment

Hard Top
Live Well Aerator
Marine Head - Holding
Lift Kit
86 Qt. Cooler Seat
Windshield Wiper
Electric Fuel Gauge
Dual Steering
Hydraulic Steering
Bow Cushions
Ped. Seat Rain Covers
Cockpit Lighting
Cabin Light
Cabin Door Hatch
Lure Cabinet

Contact your local dealer for additional options available.



SPECIFICATIONS

	17	20	21	23	25	28
Outboard						
Max. H.P.	120	140	200	235	400	470
Stern Drive H.P.	N/A	N/A	140/175/205	175/205	S-335 T-205	S-335 T-205
Plus 2 System (25")	N.A.	Available	Available	Standard	Standard	Standard
Sea Drive	V-4	V-4	V-4	V-6	S-V6/V8 T-V4/V6	Twin V-6
Fuel Capacity Gallons	30	55	70	90	166	225
Hull Design	Modified-V	Modified-V	Deep-V	Deep-V	Deep-V	Deep-V
Length	17'	20'	20'6"	23'	25'	28'
Beam	7'8"	7'8"	8'	8'	9'10"	10'6"
Weight	Outboard Models Only					
Center Console	1,500 lbs.	1,800 lbs.	2,270 lbs.	2,590 lbs.	N/A	N/A
Walkaround	N/A	N/A	2,385 lbs.	2,890 lbs.	4,700 lbs.	5,500 lbs.

In keeping with Pro-Line's policy of continuous improvements on all products, we reserve the right to change specifications without notice. Some items displayed on boats are optional equipment, and not all items shown are available on all boats. Contact your dealer for complete warranty information.



P.O. Box 1348
Crystal River, Florida 32629
(904) 795-4111

