

PRO-LINE

BOATS



Express • Walk • Sport • Bay • Dual Console

PRO•CARE
5-YEAR LIMITED WARRANTY

*A*llright, here's the deal. You go fishing. You find the fish, clean the fish, cook and eat the fish. If any covered item goes wrong with your boat, we'll fix it - for 5 years! That's right...that's Pro-Care. Pro-Line's exclusive 5-year comprehensive warranty program that backs your new Pro-Line on the majority of factory built components, and factory installed equipment. And it comes standard on all 2002 Pro-Line models.

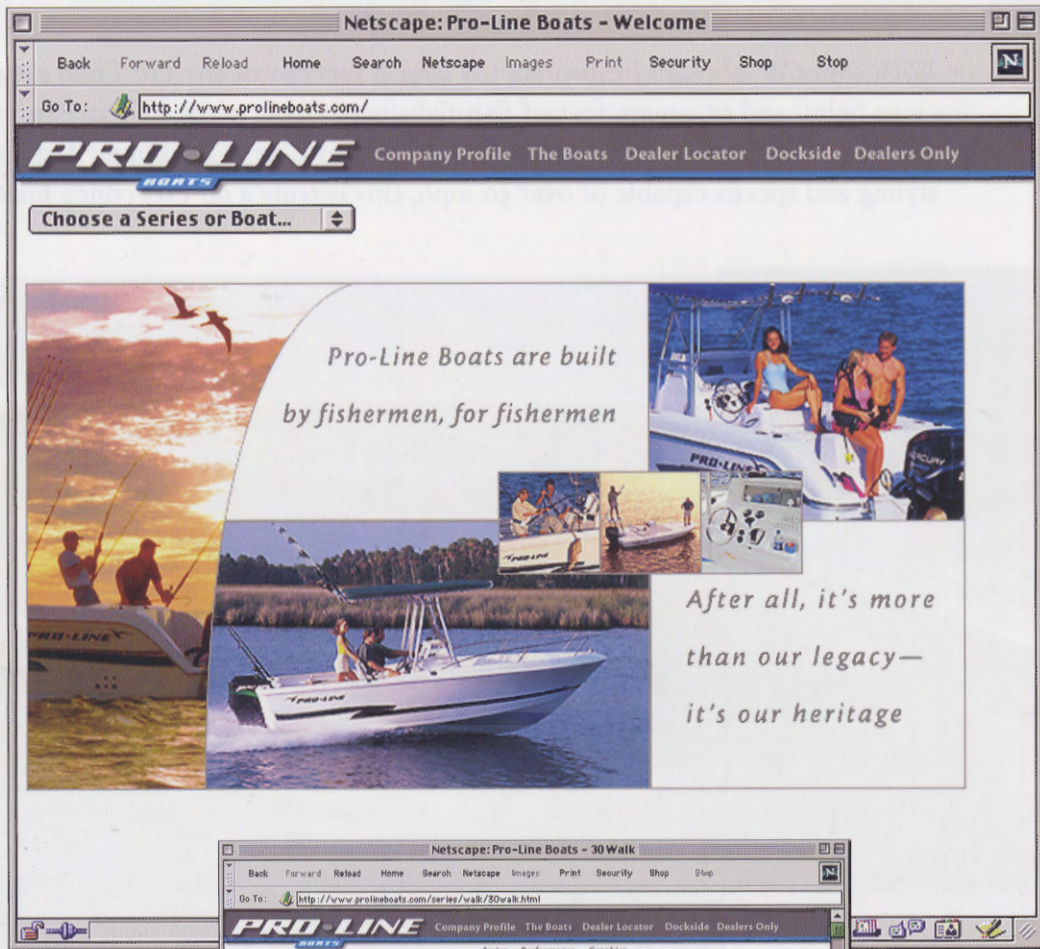
It covers items on factory-installed engines, out-drives, mechanical systems, controls, electrical systems, electronics, plumbing, lighting, stereo, galley equipment, and more! Better yet, Pro-Care comes with a 24-hour toll-free claims hotline, towing and dockside assistance on covered breakdowns*, and is transferable to the next owner. It's that simple.

How can Pro-Line do this? Build better boats and then back them better, that's how. So go ahead and fish to your hearts content. We'll make sure you can count on your Pro-Line.

*See your dealer for a complete list of covered items.

THE PRO-CARE 5-YEAR LIMITED WARRANTY.
WE BUILD THEM RIGHT, WE BACK THEM RIGHT!

PRO•CARE
5-YEAR LIMITED WARRANTY

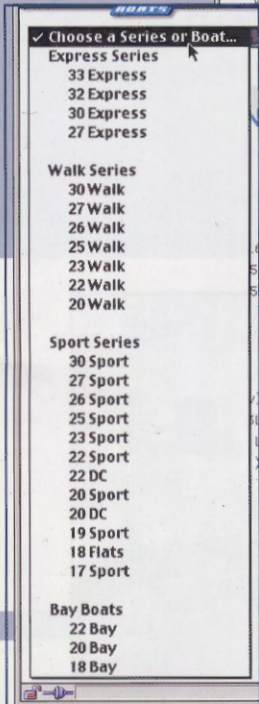
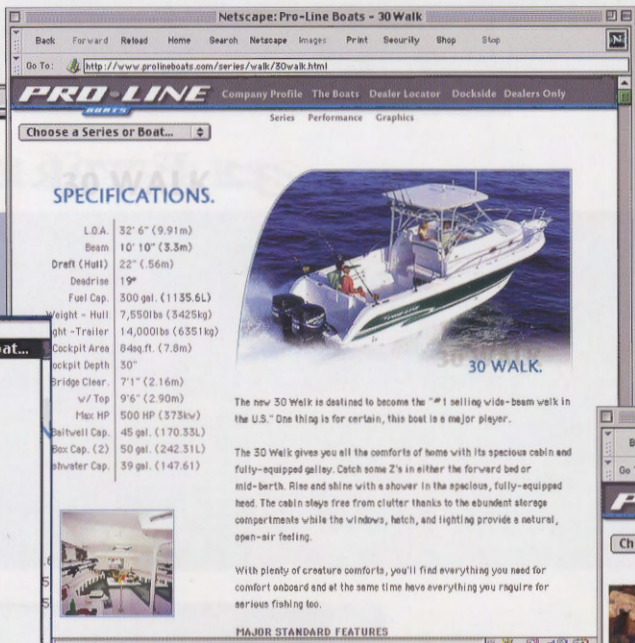


Pro-Line Boats is pleased to introduce the most comprehensive boating website to ever hit the Internet!

The goal from the beginning was to design a website for fishermen and families alike. One that keeps them coming back day after day.

Want to build a boat and see what it looks like before you buy it? How about read up on Pro-Line boat tests done by major publications from around the world? Not sure how we build a certain model? Interested in finding out how many awards have been presented to Pro-Line over the years? Need to find your local Pro-Line dealer? Well, you've come to the right place!

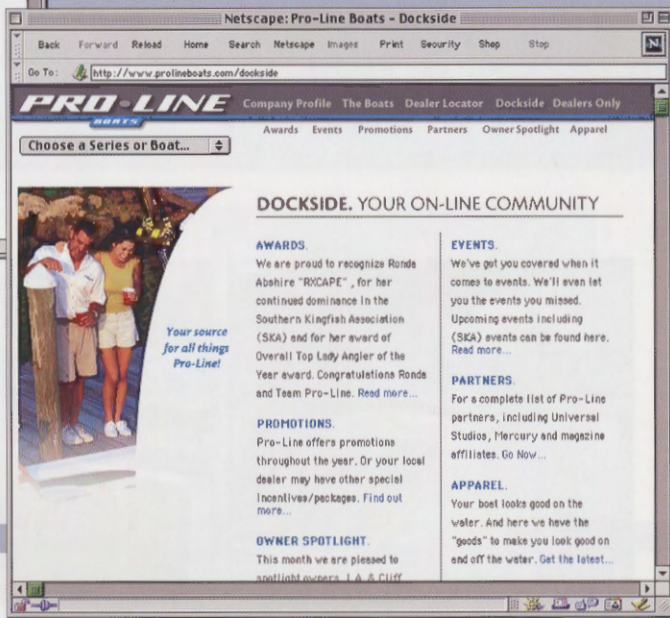
If fishing and boating is what you long for and a Pro-Line is what you're thinking about, troll over to prolineboats.com and pick the boat of your dreams!



Each boat page features full standards, options, performances, and detailed photographs.

Easy to navigate drop-down allows for one click searching.

Dockside - Your On-Line Community for everything that is Pro-Line!



EXPRESS SERIES

*P*ro-Line's 33 Express raises the bar, setting a new standard for performance, luxury and fishability. With its 12'6" beam, massive 115 sq. ft. cockpit, and over six foot of cabin headroom, this is one big roomy boat.

With over 6'8" of cabin headroom, the largest interior of any Pro-Line, a spacious helm, and 75 square feet of fish fighting cockpit space, the 32 Express delivers what you've come to expect from Pro-Line. Combining Express styling and speeds capable of over 50 mph, this is truly a do-everything boat.



33 EXPRESS

L.O.A.	33'0"
BEAM	12'6"
DRAFT - HULL	41"
DEADRISE	19°
FUEL CAPACITY	300 GAL.
WEIGHT HULL (APPR)	14,500 LBS
COCKPIT AREA	115 SQ. FT.
MAX HP	840
BRIDGE CLEARANCE W/TOWER	15'3"
CABIN HEAD ROOM	6'3"
BAITWELL CAPACITY	35 GAL.
FISH BOX CAPACITY	75 GAL.
FRESHWATER CAP.	40 GAL.

32 EXPRESS

L.O.A.	33'8"
BEAM	11'0"
DRAFT - HULL	25"
DEADRISE	19°
FUEL CAPACITY	250 GAL.
WEIGHT - HULL (APPR)	12,000 LBS.
COCKPIT AREA	75 SQ. FT.
BRIDGE CLEARANCE	7'8"
W/HARD TOP	9'6"
MAX HP	760
CABIN HEAD ROOM	6'8"
FRESH WATER CAP	35 GAL.
BAITWELL CAPACITY	35 GAL.



Looking for a bit of the good life? The 30 Express puts it all together in one stylish package. With an incredibly large cockpit, an abundant amount of fishing features, a well appointed cabin, and an open air entertainment center forward of the helm station, you'll be able to take off for a day, a night, or even longer.

Pro-Line's 27 Express is a solid fishing platform and an incredible entertainment center combined. An 80 sq. ft. fighting cockpit, above deck galley, seating galore, full bait and tackle station, and a luxuriously appointed cabin make the 27 Express a boat that can handle it all! Catch the Express Series at www.prolineboats.com.

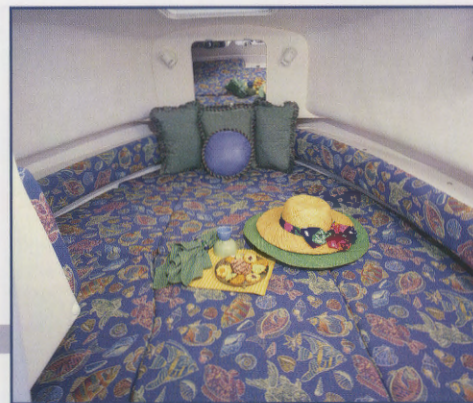


30 EXPRESS

L.O.A.	32'6"
BEAM	10'10"
DRAFT - HULL	22"
DEADRISE	19°
FUEL CAPACITY (I/O & O/B)	312 GAL.
WEIGHT - HULL (APPR)	7,700 LBS.
COCKPIT AREA	102 SQ. FT.
BRIDGE CLEARANCE	7'1"
W/ TOP	9'6"
MAX. HP	500
BAITWELL CAPACITY O/B	45 GAL.
FISH BOX CAPACITY (2)	55 GAL. each
FRESH WATER CAPACITY	30 GAL.

27 EXPRESS

L.O.A.	29'1"
BEAM	9'10"
DRAFT - HULL	21"
DEADRISE	19°
FUEL CAPACITY (I/O & O/B)	200 GAL.
WEIGHT - HULL (APPR)	5,900 LBS.
COCKPIT AREA	80 SQ. FT.
BRIDGE CLEARANCE	7'3"
W/ TOP	9'7"
MAX. HP	500
BAITWELL CAPACITY O/B	35 GAL.
FISH BOX CAPACITY (2)	50 GAL. each
FRESH WATER CAPACITY	30 GAL.



WALK SERIES

The 30 Walk gives you all the comforts of home with its spacious cabin and fully equipped galley. And with the largest cockpit in its class, large insulated fish boxes, and rod storage galore, it's easy to see why this boat has quickly become the choice of America's fishermen.

Whether it's diving, fishing, or just cruising, the 27 Walk delivers big! With 65 sq. ft. of cockpit space, recirculating bait well, insulated fish boxes, large cabin with full galley, and an enclosed stand up head, you'll find the 27 Walk is a hard-core fishing machine and a weekend retreat all wrapped up in one.



30 WALK

L.O.A.	32'6"
BEAM	10'10"
DRAFT - HULL	22"
DEADRISE	19°
FUEL CAPACITY (I/O & O/B)	300 GAL.
WEIGHT - HULL (APPR)	7,550 LBS.
COCKPIT AREA	84 SQ. FT.
BRIDGE CLEARANCE	7'1"
W/ TOP	9'6"
MAX. HP	500
BAITWELL CAPACITY	45 GAL.
FISH BOX CAPACITY (2)	50 GAL. each
FRESH WATER CAPACITY	39 GAL.

27 WALK

L.O.A.	29'1"
BEAM	9'10"
DRAFT - HULL	21"
DEADRISE	19°
FUEL CAPACITY (I/O & O/B)	200 GAL.
WEIGHT - HULL (APPR)	5,900 LBS.
COCKPIT AREA	65 SQ. FT.
BRIDGE CLEARANCE	7'9"
W/ TOP	9'7"
MAX. HP	500
BAITWELL CAPACITY O/B	35 GAL.
FISH BOX CAPACITY (2)	50 GAL. each
FRESH WATER CAPACITY	30 GAL.



Since its introduction, the Pro-Line 26 Walk has become one of the best selling boats in the company's history.

Available in outboard and sterndrive versions, the 26 Walk is designed for all types of fishing. Features include a large, well-equipped cabin, full galley, re-circulating baitwell, raw water washdown, a deep cockpit with over 45 square feet of fish fighting space, and a helm station that would make any captain proud!

Reel in a Walk at www.prolineboats.com!



26 WALK

L.O.A.	27'0"
BEAM	8'6"
DRAFT - HULL	17"
DEADRISE	19°
FUEL CAPACITY (O/B)	165 GAL.
WEIGHT - HULL (APPR)	4,250 LBS.
COCKPIT AREA	45 SQ. FT.
BRIDGE CLEARANCE	6'11"
W/ TOP	8'8"
MAX. HP	400
BAITWELL CAPACITY O/B	18 GAL.
FISH BOX CAPACITY (2)	50 GAL. each
FRESH WATER CAPACITY	15 GAL.

26 WALK I/O

L.O.A.	27'0"
BEAM	8'6"
DRAFT - HULL	17"
DEADRISE	19°
FUEL CAPACITY (I/O)	165 GAL.
WEIGHT - HULL (APPR)	4,250 LBS.
COCKPIT AREA	45 SQ. FT.
BRIDGE CLEARANCE	6'11"
W/ TOP	8'8"
MAX. HP	400
BAITWELL CAPACITY I/O	11 GAL.
FISH BOX CAPACITY (2)	50 GAL. each
FRESH WATER CAPACITY	15 GAL.



The 26 I/O and 26 O/B share the same interior and helm station layouts.



WALK SERIES

With a host of fishing amenities, a large cockpit, deep freeboard, a big cabin with a full galley, and much more, the 25 Walk offers features found on much larger boats, and is available in an I/O version.. This boat is great for an overnight getaway with the family or a day of hardcore fishing with the gang.

The Pro-Line 23 Walk comes standard with more features and amenities than any other boat in its class. With integrated rod holders, recirculating baitwell, tackle box, insulated fish boxes, and large cabin, you'll find there is no other boat that compares to the 23 Walk.



25 WALK

L.O.A.	25'5"
BEAM	8'6"
DRAFT - HULL	14"
DEADRISE	19°
FUEL CAPACITY	138 GAL.
WEIGHT - HULL (APPR)	4,150 LBS.
COCKPIT AREA	60 SQ. FT.
BRIDGE CLEARANCE	5'8"
W/ TOP	8'4"
MAX. HP	300
BAITWELL CAPACITY	15 GAL.
FISH BOX CAPACITY (2)	30 GAL. each
FRESH WATER CAPACITY	6 GAL.

23 WALK

L.O.A.	24'5"
BEAM	8'6"
DRAFT - HULL	18"
DEADRISE	22°
FUEL CAPACITY	140 GAL.
WEIGHT - HULL (APPR)	3,700 LBS.
COCKPIT AREA	49 SQ. FT.
BRIDGE CLEARANCE	6'0"
W/ TOP	8'1"
MAX. HP	300
BAITWELL CAPACITY	15 GAL.
FISH BOX CAPACITY (2)	20 GAL. each
FRESH WATER CAPACITY	6 GAL.



The 22 Walk is Pro-Line through and through. With its wide beam, deep interior freeboard, smooth ride, large cabin, and smartly equipped fishing features, the 22 Walk has become one of the best selling Pro-Lines today.

Pro-Line's 20 Walk may be the smallest cabin boat in the line but it's big on comfort and big on fishability. Wide walkarounds, hefty hardware, insulated fish boxes, deep freeboard, and a surprisingly large cabin makes the 20 Walk an easy choice for families and fishermen alike.

For more family fishing Walk information, cast in the direction of www.prolineboats.com!



22 WALK

L.O.A.	22'5"
BEAM	8'3"
DRAFT - HULL	16"
DEADRISE	19°
FUEL CAPACITY	90 GAL.
WEIGHT - HULL (APPR)	3,000 LBS.
COCKPIT AREA	58 SQ. FT.
BRIDGE CLEARANCE	5'10"
W/ TOP	8'0"
MAX. HP	225
BAITWELL CAPACITY	27 GAL.
FISH BOX CAPACITY	27 GAL.

20 WALK

L.O.A.	20'2"
BEAM	8'0"
DRAFT - HULL	15"
DEADRISE	19°
FUEL CAPACITY	70 GAL.
WEIGHT - HULL (APPR)	2,100 LBS.
COCKPIT AREA	47 SQ. FT.
BRIDGE CLEARANCE	5'10"
W/ TOP	8'0"
MAX. HP	200
BAITWELL CAPACITY	27 GAL.
FISH BOX CAPACITY	27 GAL.



The 22 Walk and 20 Walk share the same interior layout and helm.



SPORT SERIES

Compared to any other boat in its class the Pro-Line 30 Sport is longer, bigger, wider, and tougher. With a beam of nearly 11 feet wide, a large console with an enclosed head and sleeping berth, and a long list of standard "big boat" fishing features, the 30 Sport is the perfect combination of fishing, fishing, and fishing.

Big, fast and comfortable is the best way to describe this fishing machine. The 27 Sport's deep vee and wide beam will help you get to the fish fast and keep you dry under way. And with an incredibly long list of standard fishing features, an enclosed head, a large helm station and more, you'll find the 27 Sport delivers unlike any other boat on the market.

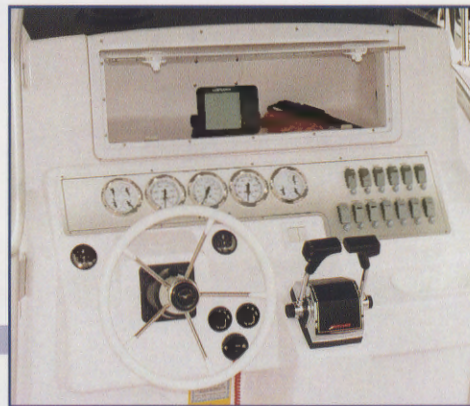
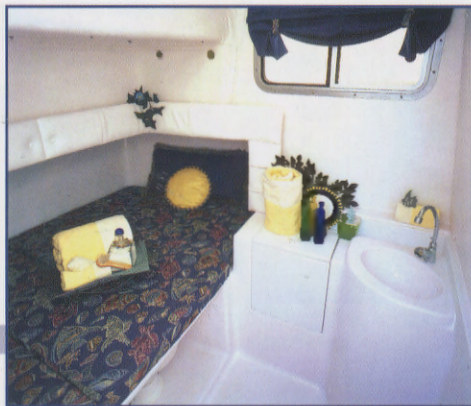


30 SPORT

L.O.A.	32'6"
BEAM	10'10"
DRAFT - HULL	22"
DEADRISE	19°
FUEL CAPACITY	300 GAL.
WEIGHT - HULL (APPR)	6,300 LBS.
COCKPIT AREA	145 SQ. FT.
BRIDGE CLEARANCE	7'0"
W/ T-TOP	8'3"
MAX. HP	500
BAITWELL CAPACITY	45 GAL.
FISH BOX CAP. (2)	90 GAL. each
FRESH WATER CAP.	39 GAL.

27 SPORT

L.O.A.	29'1"
BEAM	9'10"
DRAFT - HULL	20"
DEADRISE	19°
FUEL CAPACITY	200 GAL.
WEIGHT - HULL (APPR)	5,200 LBS.
BRIDGE CLEARANCE	7'1"
W/ T-TOP	8'2"
MAX. HP	500
BAITWELL CAPACITY	35 GAL.
FISH BOX CAP. (2)	50 GAL. each
FRESH WATER CAPACITY	15 GAL.



The 26 Sport is a true rough water machine. With a wide 8'6" beam, enclosed head in console, recirculating bait well, large casting deck, walk thru transom door, foam insulated fish boxes, and a leaning post with integrated rod holders, this center console can do it all.

Pro-Line's trailerable 25 Sport is big, big, and big. Deep freeboard, a wide 8'6" beam, large casting deck, transom door, bait and tackle station, enclosed head, and smartly equipped helm will make you feel like you just stepped into a 30 foot offshore boat, without paying the 30 foot price!

Feeding grounds for the Sports can be found at www.prolineboats.com.



26 SPORT

L.O.A.	27'0"
BEAM	8'6"
DRAFT - HULL	16"
DEADRISE	19°
FUEL CAPACITY	170 GAL.
WEIGHT - HULL (APPR)	4,500 LBS.
COCKPIT AREA	91 SQ. FT.
BRIDGE CLEARANCE	6'9"
W/ T-TOP	8'6"
MAX. HP	400
BAITWELL CAPACITY	35 GAL.
FISH BOX CAP. (2)	45 GAL. each

25 SPORT

L.O.A.	25'5"
BEAM	8'6"
DRAFT - HULL	14"
DEADRISE	19°
FUEL CAPACITY	144 GAL.
WEIGHT - HULL (APPR)	3,600 LBS.
COCKPIT AREA	104 SQ. FT.
BRIDGE CLEARANCE	6'9"
W/ T-TOP	8'1"
MAX. HP	300
BAITWELL CAPACITY	35 GAL.
FISH BOX CAPACITY	40 GAL.
FRESH WATER CAPACITY	15 GAL.



SPORT SERIES

The 23 Sport merits serious consideration by fisherman and divers alike. Standard features include an enclosed head, walk thru transom door, recirculating bait well, integrated cooler, raw water wash down, insulated fish boxes and much more. For big boat features in a 23-foot package, choose the 23 Sport for your next fishing or diving machine.

The 22 Sport has the size and amenities that let you keep on fishing when others are heading back. With a deep vee hull, 35 gallon bait well, enclosed head in console, full instrumentation, rod storage and more, the 22 Sport will satisfy the go all day fisherman in all of us.



23 SPORT

L.O.A.	24'5"
BEAM	8'6"
DRAFT - HULL	18"
DEADRISE	22°
FUEL CAPACITY	140 GAL.
WEIGHT - HULL (APPR)	3,300 LBS.
COCKPIT AREA	80 SQ. FT.
BRIDGE CLEARANCE	6'7"
W/ T-TOP	7'9"
MAX. HP	300
BAITWELL CAPACITY	35 GAL.
FISH BOX CAP	32 GAL.
FISH BOX CAP (FWD)	70 GAL.

22 SPORT

L.O.A.	22'5"
BEAM	8'3"
DRAFT - HULL	15"
DEADRISE	19°
FUEL CAPACITY	90 GAL.
WEIGHT - HULL (APPR)	2,750 LBS.
COCKPIT AREA	92 SQ. FT.
BRIDGE CLEARANCE	5'10"
W/ T-TOP	8'0"
MAX. HP	225
BAITWELL CAPACITY	35 GAL.
CASTING DECK BOX CAP.	27 GAL.



The 20 Sport is another perfect example of Pro-Line quality and fishability. This boat offers loads of fishing features and amenities including a raised casting platform, enclosed head in center console, 35 gallon bait well, and much more.

Pro-Line's 19 Sport is a do-everything boat with something for everyone. Standards include rod storage, flip-flop cooler seat, tackle box, casting deck, and an optional enclosed head. Fishing features, diving features, and family features make it all add up to 19 feet of boating fun.

The 17 Sport is built to the same demanding standards as Pro-Line's much larger boats. With a flip-flop cooler seat, gun-wale mount rod holders, large casting deck, insulated storage box, tackle box, and full instrumentation, you'll find there is no comparable boat on the water!



20 SPORT

19 SPORT

17 SPORT

L.O.A.	20'2"
BEAM	8'0"
DRAFT - HULL	15"
DEADRISE	19°
FUEL CAPACITY	70 GAL.
WEIGHT - HULL (APPR)	2,200 LBS.
COCKPIT AREA	81 SQ. FT.
BRIDGE CLEARANCE	5'10"
W/ T-TOP	8'0"
MAX. HP	200
BAITWELL CAPACITY	35 GAL.
FISH BOX CAPACITY	18 GAL.

L.O.A.	19'2"
BEAM	7'9"
DRAFT - HULL	12"
DEADRISE	19°
FUEL CAPACITY	50 GAL.
WEIGHT - HULL (APPR)	2,000 LBS.
COCKPIT AREA	54 SQ. FT.
BRIDGE CLEARANCE	4'8"
MAX. HP	150
BAITWELL CAPACITY	13 GAL.

L.O.A.	17'0"
BEAM	7'6"
DRAFT - HULL	12"
DEADRISE	19°
FUEL CAPACITY	30 GAL.
WEIGHT - HULL (APPR)	1,530 LBS.
COCKPIT AREA	59 SQ. FT.
BRIDGE CLEARANCE	3'8"
MAX. HP	135
BAITWELL CAPACITY	10 GAL.
FISH BOX CAPACITY	20 GAL.



BAY & FLATS SERIES

This new series from Pro-Line is taking the bay by storm! And with a wide beam of 8'6", a shallow hull draft of 11", bait well with raw water wash down, 9 rod holders, leaning post with cooler and more, the new Pro-Line 22 Bay is now the hottest boat on the bay!

The all-new 20 Bay boat is destined to become the choice of America's bay fishermen. Sixty gallons of fuel, an 8'6" beam, maximum horsepower rating of 200, an 11" hull draft all add up to incredible inshore fishing and exceptional offshore fishing.



24 BAY

L.O.A.	23'11"
BEAM	8'6"
DRAFT - HULL	11"
DEADRISE	13°
FUEL CAPACITY	82 GAL.
WEIGHT - HULL (APPR)	2,884 LBS.
COCKPIT AREA	90 SQ. FT.
MAX. HP	225
BAITWELL CAPACITY	18 GAL.

22 BAY

L.O.A.	21'11"
BEAM	8'6"
DRAFT - HULL	11"
DEADRISE	13°
FUEL CAPACITY	60 GAL.
WEIGHT - HULL (APPR)	2,284 LBS.
COCKPIT AREA	18.5 SQ. FT.
BRIDGE CLEARANCE	4'7"
	W/ TOP
MAX. HP	225
BAITWELL CAPACITY	15 GAL.



Inside, outside, any side. That's where the Pro-Line 18 Bay will take you day in and day out. This new model features a wide 8'0" beam, a large 50-gallon fuel tank, an enormous 88 square foot cockpit, and enough fishing features to make you the envy of every bay fisherman on the water.

The 18 Flats boat is truly the finest built and most well designed fishing platform to ever hit shallow waters. Designed by flats fisherman for flats fisherman, the 18 Flats comes standard with a recirculating baitwell, raw water washdown, lighted baitwell, lockable rod storage, an optional catch and release well, and more.

To catch more on the new Bay Series, log onto www.prolineboats.com.



20 BAY

18 BAY

18 FLATS

L.O.A.	20'5"
BEAM	8'6"
DRAFT - HULL	11"
DEADRISE	13°
FUEL CAPACITY	60 GAL.
WEIGHT - HULL (APPR)	2,059 LBS.
COCKPIT AREA	79 SQ. FT.
BRIDGE CLEARANCE	4'7"
W/ TOP	8'0"
MAX. HP	200
BAITWELL CAPACITY	15 GAL.

L.O.A.	18'10"
BEAM	8'0"
DRAFT - HULL	13"
DEADRISE	10°
FUEL CAPACITY	50 GAL.
WEIGHT - HULL (APPR)	1,800 LBS.
WEIGHT - TRAILER (APPR)	2,750 LBS.
COCKPIT AREA	88 SQ. FT.
COCKPIT DEPTH	21"
BRIDGE CLEARANCE	4'7"
MAX. HP	135
BAITWELL CAPACITY	10 GAL.

L.O.A.	18'4"
BEAM	8'0"
DRAFT - HULL	9"
DEADRISE	13°
FUEL CAPACITY	40 GAL.
WEIGHT - HULL (APPR)	2,100 LBS.
COCKPIT AREA	30 SQ. FT.
COCKPIT DEPTH	11"
BRIDGE CLEARANCE	3' 0"
MAX. HP	200
BAITWELL CAPACITY	14 GAL.
CATCH & RELEASE WELL	37 GAL.
CAST PLATFORM STORAGE	45 GAL.



DUAL CONSOLE SERIES

Combining the best features of a runabout and a fishing boat, the all-new 22 Dual Console is big on versatility. With a walkthrough windshield, large bait well, powerful raw water wash down, oversized storage compartments, flush mount rod holders, and an enormous 92 square foot cockpit, the new 22 DC delivers the best of all worlds!

The easy to maintain 20 Dual Console is ready for fishing action and ready for family fun. A wide 8'0" beam, large 70 gallon fuel tank, dual console with storage, insulated baitwell, raw water washdown, molded aft jump seats, and swim platform make this dual console 100% dual purpose.

Find out how multi-purpose the DC Series at www.prolineboats.com.

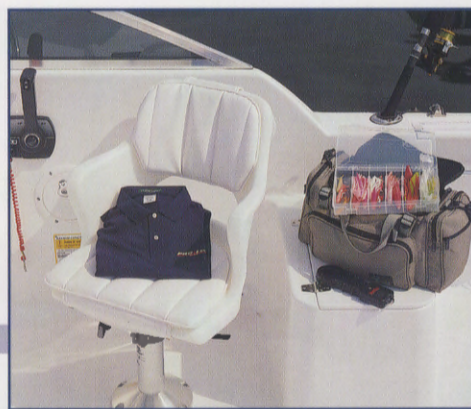


22 DUAL CONSOLE

L.O.A.	22'5"
BEAM	8'3"
DRAFT - HULL	15"
DEADRISE	19°
FUEL CAPACITY	90 GAL.
WEIGHT - HULL (APPR)	3,050 LBS.
COCKPIT AREA	92 SQ. FT.
BRIDGE CLEARANCE	6'2"
MAX. HP	225
BAITWELL CAPACITY	9.75 GAL.
FISH BOX CAPACITY	9.75 GAL.

20 DUAL CONSOLE

L.O.A.	20'2"
BEAM	8'0"
DRAFT - HULL	15"
DEADRISE	19°
FUEL CAPACITY	70 GAL.
WEIGHT - HULL (APPR)	2,500 LBS.
COCKPIT AREA	87 SQ. FT.
BRIDGE CLEARANCE	6'2"
MAX. HP	200
BAITWELL CAPACITY	9.75 GAL.
FISH BOX CAPACITY	9.75 GAL.





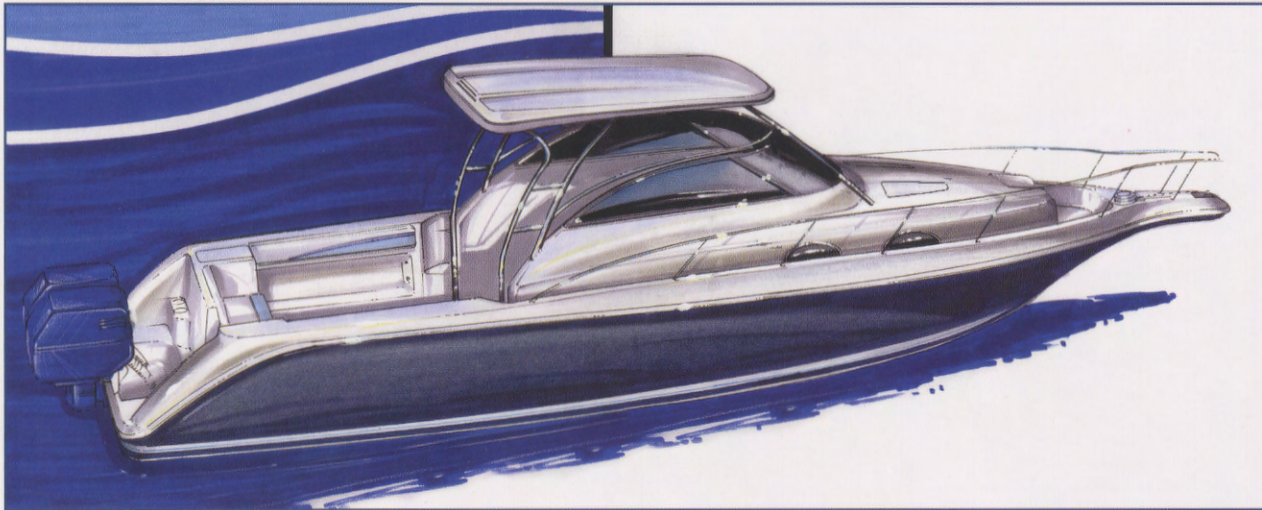
LIKE YOU, IT WAS
MADE FOR SALTWATER.

THE MERCURY® SALTWATER SERIES. WITH THE ONLY 3-YEAR CORROSION
WARRANTY ANYWHERE. THEY'RE BUILT FOR SALT. BUT DESIGNED FOR YOU.

800-MERCURY www.mercurymarine.com © 2001, Mercury Marine, All Rights Reserved

MERCURY
"1 On The Water™"

33 WALK



27 PILOT





Log onto www.prolineboats.com to locate your nearest dealer and for complete details on all Pro-Line models.

800 344-1281 • P.O. Box 1348 • Crystal River, FL 34423

While we endeavor to be as accurate as possible, certain changes in standard equipment, options and the like may have occurred which would not be included in this brochure. This includes, but is not limited to, information relating to fuel capacity, weights, speeds, fuel consumption, and overall performance as they are estimates and could/will vary with each vessel and with each application. Pro-Line reserves the right to modify our options and standards offerings as necessary for quality and performance. Your Pro-Line dealer is your best source for up-to-date or specific details about your vessel. Some pictures shown may be optional, please consult your dealer for standards and options on each boat.