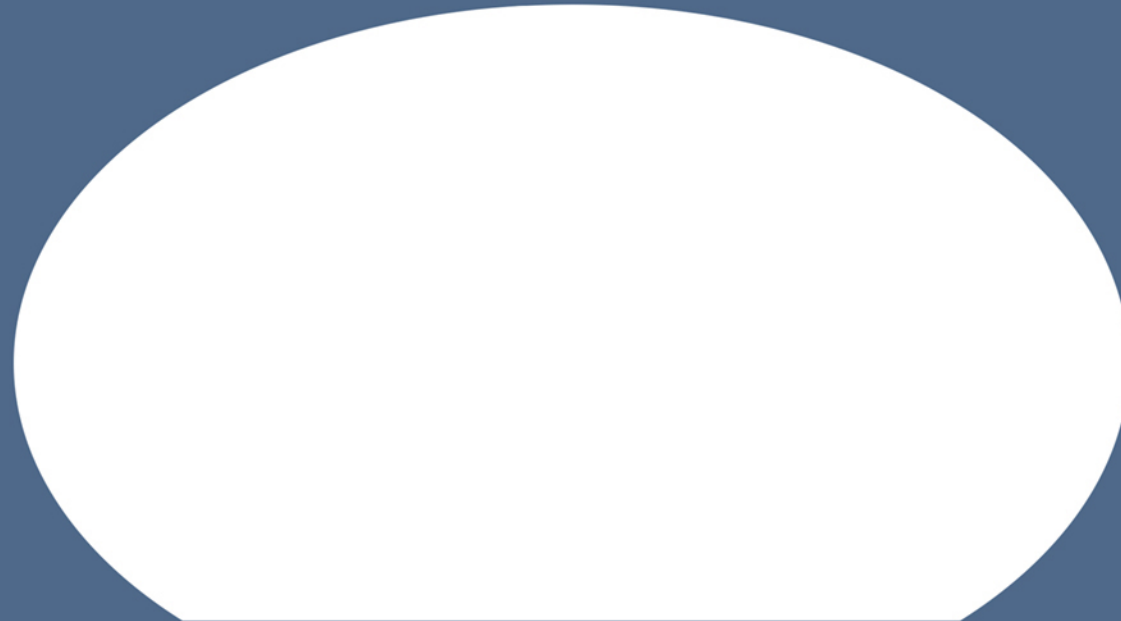


PRO-LINE



1968 - 2008

Welcome to Pro-Line



THE EVOLUTION OF CONSISTENCY

Some Things Change...

Some Do Not...

1968 - 2008

PRO-LINE

For forty years, **Pro-Line** has made boater's dreams come true.

Designing boats for family boaters to serious anglers, **Pro-Line** has led the industry in quality, craftsmanship and functionality. The past 40 years have seen eight U.S. presidents, 112 NASA space shuttle missions and the delivery of thousands of **Pro-Lines** to boaters around the world.

***It Mattered Then,
It Matters Now***

Since the first 24-foot dual console rolled out of our shop, we've committed our focus to what really matters - producing superior quality boats packed with value and built with a tradition strong enough to last 40 years.

Step aboard a **Pro-Line** and you're stepping into history - decades of refinement have perfected our vision into the boat you'll enjoy today.

Combine rugged, no-nonsense performance with stylish, comfortable designs and back it all with the best warranty in the business and you get **Pro-Line's** simple, yet enduring formula for success.

This has made **Pro-Line** the perfect boat for any stage of your life.



HISTORY TIMELINE

Key Events Along the Way



Dan Atwood - Founder



John E. Walker - General Manager

1968 Dan Atwood and his father Ray incorporate as Pro-Line Boats and sign Crystal Outboard Motors as its first dealer. Local charter guide, Capt. Sam Pecorino buys Pro-Line's first boat (24-foot Dual Console)

1970 Pro-Line moves to current corporate facility, with major expansions occurring in 1971, 1974 and 1987.

1972 Pro-Line makes its first trade show appearance at the International Marine Trades Exhibit & Conference in Chicago.

1973 Pro-Line introduces its first cuddy cabin model (24-foot).

1979 Pro-Line develops its first deep-V model (23 Center Console with cabin version).

1981 Pro-Line introduces its walk-around cabin series and sells an unprecedented 36 units at New York Boat Show. We also expanded into big-boat market with models up to 30 feet.

1986 Pro-Line is sold to New York investment group headed by Lewis Raneri, Lee Kimmell and Ken Wilson.

1991 John E. Walker joins Pro-Line launching a new era of production and design.



PRO-LINE

1992 Pro-Line comes into the corporate family of American Marine Holdings.

1994 Pro-Line develops Fiberglass Integrated Structural Technology (FIST), which replaces wood with composite coring and delivers lighter boats with lower maintenance requirements.

1995 Lee Kimmell becomes CEO of AMH and invigorates Pro-Line with his business savvy.

2000 Pro-Line trades a new boat for Capt. Sam Pecorino's original 24-foot Dual Console. Still functional, the boat is kept as a museum piece and used in promotional events.

2001 Capt. Chris Chase wins Southern Kingfish Association Angler of the Year title in a 34-foot Pro-Line Center Console.

2001 Pro-Line sells 144 Center Consoles (24-footers) to the Mexican government for law enforcement. (Our largest governmental contract.)

2006 Capt. Steve Quinlan of Team Strike Zone wins his 2nd consecutive Shark Hunters tournament title in a 23-foot Pro-Line Center Console that he won for his 2005 victory.

2006 John E. Walker becomes General Manager of Pro-Line and brings more than 25 years of industry expertise into full focus.



Take a virtual tour or see video of all models at: www.prolineboats.com



Express Series

Big Performance on Big Water

When the deep, blue sea beckons, **Pro-Line** answers with an offshore warrior well suited for the task - spacious cockpits, non-skid decking, ergonomically designed helm stations and plenty of rod holders and tackle storage. We've fished where you fish. That's why we've built these boats to not only endure, but to dominate rough conditions with absolutely no sacrifice in angling performance.

You'll also find **Pro-Line Express Boats** supremely accommodating for relaxed family excursions. Plenty of comfortable seating, transom door, a swim platform integrated with ladder, and spacious cabins with all the amenities of a luxury cruise will help you enjoy the journey as much as the destination.



HAVE IT ALL. GO PRO!

 **PRO-LINE**

HAVE IT ALL. GO PRO!

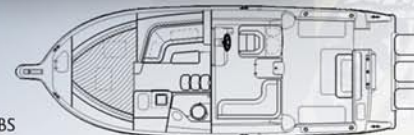


35 Express

- Baitwell w/Light
- Cabin Table - Dinette
- Battery Charger
- Drink Holders
- Cabin Curtains, Cushions & Pillows
- City Water Hook-Up
- Cockpit Lights
- Dive Platform - Integrated w/Ladder
- Electrical Distribution Panel
- Fish Boxes w/Macerator
- Full Galley - Refrigerator, Sink, Microwave & Electric Stove
- Full Instrumentation
- Head w/Fresh Water Pull Out Shower & Sink
- Raw Water Washdown
- Trim Tabs w/Indicators
- Shore Power w/Cord
- Water Heater
- Windlass w/Rope & Chain



LENGTH	35' 6"
BEAM	12' 6"
DRAFT (HULL)	25"
DEADRISE	19 DEG
FUEL	320 GAL
WEIGHT - HULL	11,200 LBS
WEIGHT - TRAILER	15,000 LBS



COCKPIT AREA	115 SQ FT
COCKPIT DEPTH	25"
BRIDGE CLEARANCE	10' 2"
w/TOWER	15' 3"
MAX HP	900
BAITWELL	45 GAL
FISHBOX (2)	125 GAL
FRESH WATER	60 GAL



Take a virtual tour or see video of all models at: www.prolineboats.com

Express Series

HAVE IT ALL. GO PRO!



32 Express

- Baitwell w/Light • Battery Charger
- Drink Holders • Cabin Curtains, Cushions & Pillows
- Cabin Table w/Filler Cushion
- City Water Hook - Up • Cockpit Lights
- Dive Platform - Integrated w/Ladder
- Electrical Distribution Panel
- Fish Boxes w/Macerator
- Full Galley - Refrigerator, Sink, Microwave & Alcohol/Electric Stove
- Full Instrumentation
- Head w/Fresh Water Pull Out Shower & Sink
- Raw Water Washdown • Trim Tabs
- Shore Power w/Cord
- Water Heater
- Windlass w/Rope & Chain

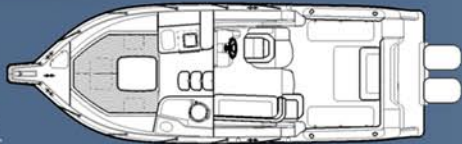


29 Express

- Baitwell w/Light
- Battery Charger
- Drink Holders
- Cabin Curtains, Cushions & Pillows
- Cabin Table w/Filler Cushion
- City Water Hook - Up
- Cockpit Lights
- Dive Platform - Integrated w/Ladder
- Electrical Distribution Panel
- Fish Boxes w/Macerator
- Full Galley - Refrigerator, Sink, Alcohol/Electric Stove
- Full Instrumentation
- Head w/Fresh Water Pull Out Shower & Sink
- Raw Water Washdown • Trim Tabs
- Shore Power w/Cord

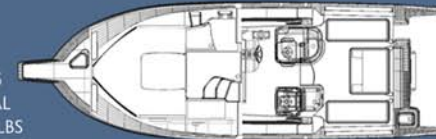


LENGTH 32' 4"
 BEAM 10' 10"
 DRAFT (HULL) 23"
 DEADRISE 22 DEG
 FUEL 300 GAL
 WEIGHT - HULL 9,500 LBS
 WEIGHT - TRAILER 13,400 LBS



COCKPIT AREA 81 SQ. FT.
 COCKPIT DEPTH 29"
 BRIDGE CLEARANCE 8' 3"
 W/HARD TOP 10' 0"
 MAX HP 600
 BAITWELL 35 GAL
 FISHBOX (2) 125 GAL
 FRESH WATER 39 GAL

LENGTH 29' 4"
 BEAM 9' 8"
 DRAFT (HULL) 22"
 DEADRISE 22 DEG
 FUEL 200 GAL
 WEIGHT - HULL EST 7,500 LBS
 WEIGHT - TRAILER EST 10,000 LBS



COCKPIT AREA 63 SQ. FT.
 COCKPIT DEPTH 28"
 BRIDGE CLEARANCE 8' 3"
 W/HARD TOP 10' 0"
 MAX HP 600
 BAITWELL 35 GAL
 FISHBOX (2) 125 GAL
 FRESH WATER 39 GAL

Big Performance on Big Water



26 Express

- 12-Volt Receptacle
- Baitwell w/Raw Water Washdown & Light
- Bilge Pumps (2) - 1 Forward, 1 Aft
- Bow Handrail - Stainless Steel
- Bow Pulpit w/Anchor Roller
- Cabin Door - Poly • Cabin Hatch
- Cabin Lights • Cabin Portholes
- Cabin Sink - Fresh Water
- Filler Board w/Cushion
- Compass • Dive Platform
- - Integrated w/Ladder
- Drink Holders - Stainless Steel
- Fish Boxes w/Macerator Pump-Out
- Galley w/Butane Stove
- Gunnel Trim - Rigid Vinyl w/ SS Insert
- Head - Porta-Potti
- Horn - Electric
- Rod Holders - 2 Pair
- Rod Racks - Cockpit (8) Horizontal
- Switch and Breaker Panel
- Transom Door
- Trim Tabs
- Windshield - Tempered Glass



Take a virtual tour or see video of all models at: www.prolineboats.com

LENGTH 26' 4"
 BEAM 8' 6"
 DRAFT (HULL) 18"
 DEADRISE 22 DEG
 FUEL 200 GAL
 WEIGHT - HULL 5380 LBS
 WEIGHT - TRAILER 8340 LBS



COCKPIT AREA 58 SQ FT
 COCKPIT DEPTH 27"
 BRIDGE CLEARANCE 6' 8"
 w/TOP 9' 0"
 MAX HP 450
 BAITWELL 20 GAL
 FISHBOX (2) 74 GAL
 FRESH WATER 15 GAL

Express Series

HAVE IT ALL. GO PRO!



23 Express

- Anchor Roller
- Baitwell w/Raw Water Washdown & Light
- Bilge Pump • Bow Handrail - Stainless Steel
- Cabin Cushion(s) • Cabin Door - Poly
- Cabin Hatch
- Cabin Lights • Cabin Portholes
- Cleats - 7 • Compass
- Dive Platform - Integrated w/Ladder
- Fish Boxes w/Macerator
- Gunnel Trim - Rigid Vinyl w/ SS Insert
- Porta-Potti w/Filler Board • Rod Holders - 1 Pair
- Rod Racks - Cockpit (6) Horizontal • Rope Locker Storage
- Seating - Captains Chairs • Steering - Hydraulic (Single Verado - Power)
- Transom Door
- Windshield - Tempered Glass

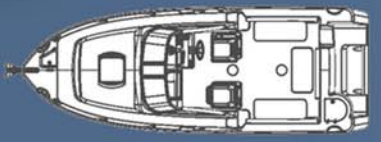


20 Express

- Baitwell w/Raw Water Washdown & Light • Bilge Pump
- Bow Handrail - Stainless Steel
- Bow Pulpit w/Anchor Roller
- Cabin Cushion(s) • Cabin Door - Poly
- Cabin Hatch • Cabin Interior - Geometric Spice or Cosmic Caribbean
- Cabin Portholes • Cleats - 7 • Compass
- Drink Holders - Stainless Steel
- Half Dive Platform w/Ladder
- Rod Holders - 1 Pair
- Rod Racks - Cockpit (6) Horizontal
- Rope Locker Storage
- Seating - Aft Jump (2 Molded)
- Steering - Hydraulic
- Windshield - Tempered Glass

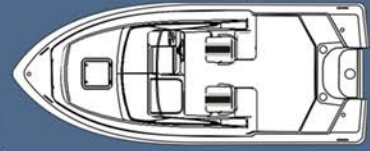


LENGTH	23' 0"
BEAM	8' 6"
DRAFT (HULL)	17"
DEADRISE	20 DEG
FUEL	125 GAL
WEIGHT - HULL	3,900 LBS
WEIGHT - TRAILER	6,510 LBS



COCKPIT AREA	52 SQ.FT
COCKPIT DEPTH	25"
BRIDGE CLEARANCE	6' 6"
w/TOP	9' 0"
MAX HP	300
BAITWELL	18 GAL
FISHBOX (2)	80 GAL
FRESH WATER (OPT)	10 GAL

LENGTH	20' 6"
BEAM	8' 5"
DRAFT (HULL)	15"
DEADRISE	19 DEG
FUEL	70 GAL
WEIGHT - HULL	2,750 LBS
WEIGHT - TRAILER	3,950 LBS



COCKPIT AREA	47 SQ.FT
COCKPIT DEPTH	22"
BRIDGE CLEARANCE	5' 10"
w/TOP	8' 5"
MAX HP	200
BAITWELL	27 GAL
FISHBOX	27 GAL

Grand Sport

Rule the Water



Built tough for demanding offshore missions, yet designed with a visually commanding presence, the **29 Grand Sport** is truly in a class by itself.

Run offshore and tackle hefty grouper, fly your sailfish kites or troll the beach for kingfish – this full-bodied boat is game for anything. Between fishing excursions, take family and friends cruising or island hopping and let the **29 Grand Sport** show off its charming side.

Whether you're turning a big fish or turning heads, **Pro-Line's 29 Grand Sport** makes a memorable impression.



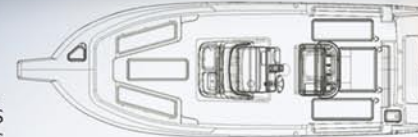
29 Grand Sport

- Baitwell w/Light
- Battery Switch for Dual Batteries
- Bilge Pumps (3) - 1 Forward, 2 Aft
- Bow Handrail - Stainless Steel
- Casting Deck w/Storage
- Center Console w/Head - Porta-Potti
- Cockpit Bolsters - Fore & Aft
- Cockpit Lights
- Cockpit Shower - Fresh Water
- Compass
- Dive Platform - Integrated w/Ladder
- Drink Holders - Stainless Steel
- Fish Boxes - Fwd w/Overboard Drain
- Fish Boxes - Aft w/Macerator
- Full Instrumentation
- Raw Water Washdown
- Rod Holders (2 Pair)
- Rod Holders - Transom (4)
- Rod Racks - Cockpit (4) Horizontal



CATCH IT ALL. GO PRO!

LENGTH	29' 4"
BEAM	9' 8"
DRAFT (HULL)	22"
DEADRISE	22 DEG
FUEL	240 GAL
WEIGHT - HULL EST	6,310 LBS
WEIGHT - TRAILER EST	9,530 LBS



COCKPIT AREA	127 SQ. FT
COCKPIT DEPTH	26"
BRIDGE CLEARANCE	7' 11"
W/HARD TOP	10' 4"
MAX HP	600
BAITWELL	50 GAL
FISHBOX (2)	130 GAL
FRESH WATER	15 GAL

XP Series

Go With Safety



You can't change the weather, but you can limit its effects by shielding yourself with a floating fortress. That's what a **Pro-Line Pilot** model offers – a solid three-sided helm enclosure that provides shelter from wind, rain and scorching heat.

A popular choice for professional fishermen spending long hours on the water, or the family boater concerned with comfort, the **Pro-Line Pilot** complements its protection with a full array of fishing features such as roomy fish boxes, tackle storage and rod holders.



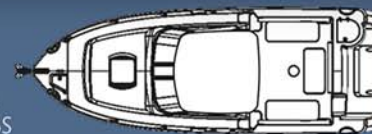
26 XP

- 12-Volt Receptacle
- Baitwell w/Raw Water Washdown & Light
- Bilge Pumps (2) - 1 Forward, 1 Aft
- Bow Handrail - Stainless Steel
- Bow Pulpit w/Anchor Roller
- Cabin Door - Poly • Cabin Hatch
- Cabin Lights • Cabin Portholes
- Cabin Sink - Fresh Water
- Filler Board w/Cushion
- Compass • Dive Platform
- Integrated w/Ladder
- Drink Holders - Stainless Steel
- Fish Boxes w/Macerator Pump-Out
- Galley w/Butane Stove
- Gunnel Trim - Rigid Vinyl w/ SS Insert
- Head - Porta-Potti • Horn - Electric
- Rod Holders - 2 Pair
- Rod Racks - Cockpit (8) Horizontal
- Switch and Breaker Panel
- Top - Hard Top w/Storage
- Transom Door
- Trim Tabs
- Windshield - Tempered Glass



CATCH IT ALL. GO PRO!

LENGTH	26' 4"
BEAM	8' 6"
DRAFT (HULL)	17"
DEADRISE	22 DEG
FUEL	200 GAL
WEIGHT - HULL	5,380 LBS
WEIGHT - TRAILER	8,240 LBS



COCKPIT AREA	58 SQ FT
COCKPIT DEPTH	27"
BRIDGE CLEARANCE	9' 0"
MAX HP	450
BAITWELL	20 GAL
FISHBOX (2)	74 GAL
FRESH WATER	15 GAL

CATCH IT ALL. GO PRO!

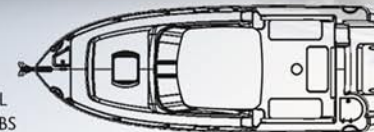


23 xp

- Anchor Roller
- Baitwell w/Raw Water Washdown & Light
- Bilge Pump • Bow Handrail - Stainless Steel
- Cabin Cushion(s) • Cabin Door - Poly
- Cabin Hatch
- Cabin Lights • Cabin Portholes
- Cleats - 7 • Compass
- Dive Platform - Integrated w/Ladder
- Fish Boxes w/Macerator
- Gunnel Trim - Rigid Vinyl w/ SS Insert
- Porta-Potti w/Filler Board • Rod Holders - 1 Pair
- Rod Racks - Cockpit (6) Horizontal • Rope Locker Storage
- Seating - Captains Chairs
- Steering - Hydraulic (Single Verado - Power)
- Top - Hard Top w/Storage
- Transom Door
- Windshield - Tempered Glass



LENGTH 23' 0"
 BEAM 8' 6"
 DRAFT (HULL) 17"
 DEADRISE 20 DEG
 FUEL 125 GAL
 WEIGHT - HULL 3,900 LBS
 WEIGHT - TRAILER 6,410 LBS



COCKPIT AREA 52 SQ.FT
 COCKPIT DEPTH 25"
 BRIDGE CLEARANCE TBD
 MAX HP 300
 BAITWELL 18 GAL
 FISHBOX (2) 80 GAL
 FRESH WATER (OPT) 10 GAL



Take a virtual tour or see video of all models at: www.prolineboats.com

Super Sport Series

Style with Substance

When the bite's on, you demand polished performance from everyone around you. Expect no less from a **Pro-Line Super Sport** – the boat that knows how to fish.

A rugged deep-v hull with sleek "go-fast" form ensures that you're the first team on the action, while a brilliantly conceived cockpit with perfectly placed rod holders, tackle storage and baitwell keeps your operation running smoothly.



PRO-LINE



Take a virtual tour or see video of all models at: www.prolineboats.com

MORE EXCITEMENT. GO PRO!

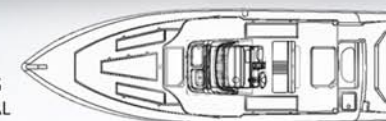


29 Super Sport

- Anchor Roller
- Baitwell w/Light
- Battery Switch for Dual Batteries
- Bilge Pump
- Bow Hand Rail
- Center Console w/Enclosed Head - Porta-Potti
- Cockpit Bolsters, Lights & Shower
- Compass
- Dive Platform - Integrated w/Ladder
- Drink Holders
- Electronics Box w/Lock
- Fish Boxes w/Macerator - Forward & Aft
- Full Instrumentation
- Raw Water Washdown
- Rod Holders - 2 Pair
- Rod Racks - Cockpit (4) Horizontal
- Rope Locker Storage
- Seating - Aluminum Leaning Post w/Backrest, Rodholders, Storage & Cooler
- Switch & Breaker Panel
- Transom Door



LENGTH	28' 7"
BEAM	9' 0"
DRAFT (HULL)	21"
DEADRISE	22 DEG
FUEL	192 GAL
WEIGHT - HULL	5,300 LBS
WEIGHT - TRAILER	8,300 LBS



COCKPIT AREA	101 SQ.FT
COCKPIT DEPTH	30"
BRIDGE CLEARANCE	7' 7"
W/TOP	8' 10"
MAX HP	600
BAITWELL	45 GAL
FISHBOX (2)	15 GAL
FISHBOX	113 GAL
FRESH WATER	15 GAL



Super Sport Series



26 Super Sport

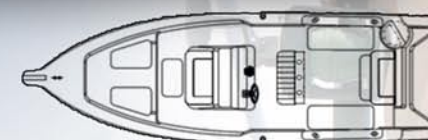


- Baitwell w/Light
- Bilge Pumps (2) - 1 Fwd, 1 Aft
- Bow Hand Rail - Stainless Steel
- Bow Pulpit w/Anchor Roller
- Center Console w/Enclosed Head (Porta-Potti)
- Compass
- Dive Platform
 - Integrated w/Ladder
- Drink Holders - Stainless Steel
- Fish Boxes w/Macerator
- Full Instrumentation
- Raw Water Washdown
- Rod Holders (2 Pair)
- Rod Racks
 - Cockpit (8) Horizontal
- Rope Locker Storage
- Seating - Aluminum
 - Leaning Post w/Backrest, Rod Holders, & Cooler
- Switch & Breaker Panel
- Transom Door



MORE EXCITEMENT. GO PRO!

LENGTH	26' 4"
BEAM	8' 6"
DRAFT (HULL)	18"
DEADRISE	22 DEG
FUEL	156 GAL
WEIGHT - HULL	4,400 LBS
WEIGHT - TRAILER	7,040 LBS
COCKPIT AREA	92 SQ.FT



COCKPIT DEPTH	27"
BRIDGE CLEARANCE	6' 10"
W/TOP	9' 2"
MAX HP	450
BAITWELL	20 GAL
OPT LP BAITWELL	25 GAL
FISHBOX (2)	74 GAL
FRESH WATER	15 GAL

Style with Substance



24 Super Sport

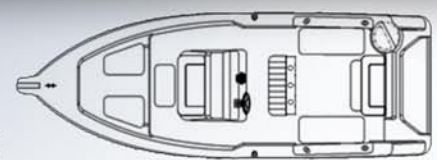


- Baitwell w/Light
- Bilge Pump
- Bow Hand Rail - Stainless Steel
- Bow Pulpit w/Anchor Roller
- Center Console w/Enclosed Head (Porta-Potti)
- Compass
- Dive Platform
 - Integrated w/Ladder
- Drink Holders - Stainless Steel
- Fish Boxes w/Macerator
- Full Instrumentation
- Raw Water Washdown
- Rod Holders
- Rod Racks - Cockpit (8) Horizontal
- Rope Locker Storage
- Seating - Aluminum Leaning Post w/Backrest, Rodholders, & Cooler
- Switch & Breaker Panel
- Transom Door



Take a virtual tour or see video of all models at: www.prolineboats.com

LENGTH	24' 5"
BEAM	8' 6"
DRAFT (HULL)	18"
DEADRISE	22 DEG
FUEL	140 GAL
WEIGHT - HULL	3,400 LBS
WEIGHT - TRAILER	5,500 LBS
COCKPIT AREA	80 SQ.FT



COCKPIT DEPTH	27"
BRIDGE CLEARANCE w/TOP	6' 11"
MAX HP	300
BAITWELL	20 GAL
OPT LP BAITWELL	25 GAL
FISHBOX (FORWARD)	70 GAL
FISHBOX	32 GAL

Sport Series

Experience the essence of fishing on a safe, stable platform that's clearly designed for comfort and efficiency.

Spacious in its layout, a **Pro-Line Sport** offers lots of room for rigging and tackle prep, 360-degree fishability and ample fish boxes for icing your big catch.

You can chase the big ones with fellow fishing fanatics, or relax the pace and entertain your family. Whatever your objective, **Pro-Line Sport** models put more "fish" in fishing.



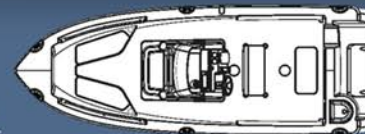
23 Sport

- Baitwell w/Light
- Bilge Pump
- Bow Handrail - Stainless Steel (Low Profile)
- Casting Deck - Insulated Fish Box/Storage Box
- Center Console w/Enclosed Head
- Compass
- Dive Platform - Integrated w/Ladder
- Drink Holders - Stainless Steel
- Grab Rail (Stainless Steel) - Windshield
- Raw Water Washdown
- Rod Holders
- Rod Racks - Cockpit (6) Horizontal
- Rope Locker Storage
- Seating - Aluminum Leaning Post w/Cushion & Storage
- Switch and Breaker Panel



GET MORE. GO PRO!

LENGTH 23' 0"
 BEAM 8' 6"
 DRAFT (HULL) 17"
 DEADRISE 20 DEG
 FUEL 125 GAL
 WEIGHT - HULL 3,540 LBS
 WEIGHT - TRAILER 5,560 LBS



COCKPIT AREA 86 SQ FT
 COCKPIT DEPTH 25"
 BRIDGE CLEARANCE 6' 8"
 W/TOP 9' 8"
 MAX HP 300
 BAITWELL 18 GAL
 FISHBOX (2) 60 GAL

The Essence of Fishing

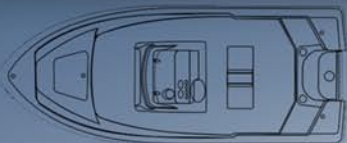


20 Sport

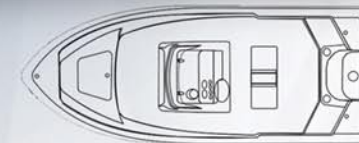
- Baitwell w/Light
- Bilge Pump
- Bow Handrail - Stainless Steel (Low Profile)
- Casting Deck - Insulated Fish Box/Storage Box
- Center Console w/Enclosed Head
- Compass
- Drink Holders - Stainless Steel
- Grab Rail (Stainless Steel) - Windshield
- Half Dive Platform w/Ladder
- Raw Water Washdown
- Rod Holders
- Rod Racks - Cockpit (6) Horizontal
- Rope Locker Storage
- Seating - Aluminum Leaning Post
- Seating - Aft Jump Seats (2 Molded)
- Switch and Breaker Panel



18 SPORT
COMING SOON



LENGTH 20' 6"
 BEAM 8' 5"
 DRAFT (HULL) 15"
 DEADRISE 19 DEG
 FUEL 70 GAL
 WEIGHT - HULL 2,600 LBS
 WEIGHT - TRAILER 3,700 LBS



COCKPIT AREA 81 SQ FT
 COCKPIT DEPTH 24"
 BRIDGE CLEARANCE 5' 10"
 W/TOP 8' 0"
 MAX HP 200
 BAITWELL 18 GAL
 FISHBOX 25 GAL

Dual Console

Sport Utility Vessel



Providing a bit of nostalgia, **Pro-Line's** new **23-foot Dual Console** embodies the versatile spirit of the company's original 24-footer, but with a full complement of contemporary advancements.

From its numerous seating configurations; pass-through windshield; loads of storage and a sleek, modern design; the **23 DC** provides endless entertainment in a fun bow-riding style for families and friends. Whether it's skiing, diving, sightseeing, camping, or just a simple play day on the lake, river or coast, this boat does it all.

And when it's time to wet a line, the **23 DC** continues **Pro-Line's** proud heritage of angling excellence that started four decades ago with its rugged predecessor. Rod holders, a lighted baitwell and roomy fish box ensure fond fishing memories.



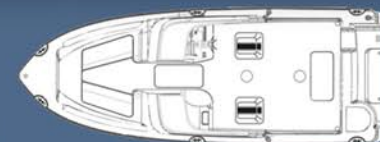
23 Dual Console

- Baitwell w/Raw Water Washdown & Light
- Bilge Pump
- Bow Handrail - Stainless Steel (Low Profile)
- Console - Dual w/Head & Storage
- Dive Platform - Integrated w/Ladder
- Drink Holders - Stainless Steel
- Glove Box w/Lock
- Gunnel Trim - Rigid Vinyl w/ SS Insert
- Porta-Potti (Inside Port Console)
- Rod Holders - 1 Pair
- Rod Racks - Cockpit (6) Horizontal
- Rope Locker Storage
- Seating - Ladder Back Chairs
- Steering - Hydraulic (Single Verado - Power)
- Storage - Floor
- Switch and Breaker Panel
- Transom Door
- Windshield - Tempered Glass w/Pass - Thru & Curtain



GET MORE. GO PRO!

LENGTH 23' 0"
 BEAM 8' 6"
 DRAFT (HULL) 17"
 DEADRISE 20 DEG
 FUEL 125 GAL
 WEIGHT - HULL 3,920 LBS
 WEIGHT - TRAILER 5,565 LBS



COCKPIT AREA 65 SQ.FT
 COCKPIT DEPTH 25"
 BRIDGE CLEARANCE 5' 11"
 W/ARCH 7' 11"
 MAX HP 300
 BAITWELL 18 GAL
 FISHBOX(2) 60 GAL
 HEAD HEADROOM 4' 0"

Bay Boat Series

Stealth Stability

Hit the backcountry for redfish, snook and trout or work coastal waters for tarpon, mackerel, kingfish and grouper. With diverse possibilities, you'll enjoy large baitwells, ample storage and fishing-friendly options such as a trolling motor and power-pole.

Spacious deck layouts, wide beams and cleverly constructed cockpits provide plenty of fish-fighting room, while the classic **Pro-Line** hull enables you to handle a little chop on the outside.

Forget traditional limits—**Pro-Line Bay Boats** expand your range and fishability. From skinny water stalking to coastal trolling, these boats do it all.



23 Bay XS



- Baitwell w/Light (Port & Aft)
- Bilge Pump
- Casting Deck - Insulated Fish Box/Storage Box
- Center Console w/Storage & Forward Baitwell
- Compass
- Drink Holders - Stainless Steel
- Grab Rail (SS - Powder Coated) - Windshield
- Raw Water Washdown
- Recirculating Baitwell Timers (2)
- Rod Holders (2 Pair)
- Rod Holders (6) Vertical (Stainless Steel)
- Rod Storage (Lockable) Starboard
- Rope Locker Storage
- Seating - Aluminum Leaning Post w/Rod Holders, Storage & Cooler (Powder Coated)
- Seating - Transom
- Switch and Breaker Panel
- Seating - Fwd Console w/Cushion

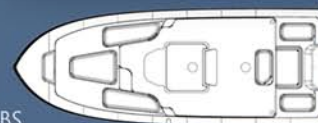
23 Bay



- Baitwell w/Light
- Bilge Pump
- Casting Deck - Insulated Fish Box/Storage Box
- Center Console w/Storage
- Compass
- Drink Holders - Stainless Steel
- Grab Rail (Stainless Steel) - Windshield
- Raw Water Washdown
- Rod Holders (1 Pair)
- Rod Holders (6) Vertical
- Rod Storage (Lockable) Starboard
- Rope Locker Storage
- Seating - Leaning Post w/Backrest, & Cooler
- Seating - Fwd Console w/Cushion & Storage
- Switch and Breaker Panel

FISH IT ALL. GO PRO!

LENGTH 23' 0"
 BEAM 8' 6"
 DRAFT (HULL) 11"
 DEADRISE 15 DEG
 FUEL 80 GAL
 WEIGHT - HULL 3,450 LBS
 WEIGHT - TRAILER 4,705 LBS



COCKPIT AREA 85 SQ. FT.
 COCKPIT DEPTH 20"
 BRIDGE CLEARANCE 5' 0"
 W/TOP TBD
 MAX HP 300
 BAITWELL - PORT AFT 38 GAL
 FISHBOX 98 GAL

FABRIC OPTIONS

Cabin Interior Fabrics



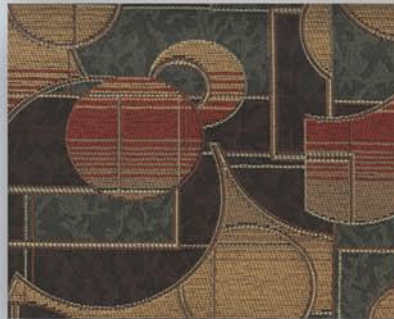
Cinnamon Leaves
35 Express



Cinnamon Leaves



Geometric Spice
21 thru 32



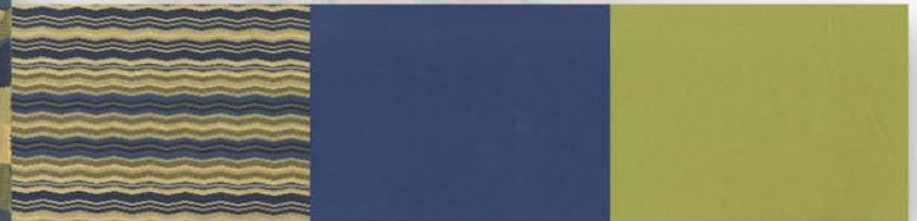
Geometric Spice



Cosmic Caribbean
21 thru 32



Cosmic Caribbean



2008 Graphic Options

FLARE (Standard)



WATERLINE (Options)



HULL COLOR-FLARE (Option)



HULL COLOR-WATERLINE (Options)



WATERLINE FULL HULL COLOR (Options)



PRO-LINE

PRO-LINE

PRO-LINE

PRO-LINE

PRO-LINE



Take a virtual tour or see video of all models at: www.prolineboats.com

OPTION PACKAGES

Available

Convenience Package
Tournament Package
Electronics Packages

20 Express	CP 1	EP
20 Sport	CP 1	EP
23 Bay	TP 1	EP
23 Bay XS		EP
23 Dual Console	CP 2	EP
23 Express	CP 2	TP 5
23 Sport	CP 2	TP 2
23 XP Pilot	CP 2	EP
24 Super Sport	CP 2	TP 3
26 Express		TP 6
26 Super Sport		TP 4
26 XP Pilot		EP
29 Express		
29 Grand Sport		
29 Super Sport		
32 Express		
35 Express		

EP Electronics Packages

CP 1 12-Volt Receptacle, Cockpit Bolsters w/ Jump Seat Backrest, Cockpit Lights, Head - Porta-Potti (Inside Console/Cabin), Rod Holders (1 Pair)

CP 2 12-Volt Receptacle, Cockpit Bolsters, Cockpit Lights, Rod Holders (1 Pair)

TP 1 Baitwell (10 gal) - Console (Plumbed from Port Aft); Baitwell (38 gal) & Light - Stbd Aft; Battery Switch for Dual Batteries; Rod Holders - 1 Pair; Seating - Aluminum Leaning Post w/ Rod Holders, Storage & Cooler; Trim Tabs w/ Indicators

TP 2 Battery Switch for Dual Batteries, Convenience Package, Spreader Lights, T-Top (Rigid) w/ Storage Box

TP 3 Battery Switch for Dual Batteries, Cockpit Shower - Cold, Convenience Package, Spreader Lights, T-Top (Rigid) w/ Storage Box, Trim Tabs

TP 4 Battery Switch for Dual Batteries, Cockpit Bolsters, Cockpit Lights, Spreader Lights, T-Top (Rigid) w/ Storage Box

TP 5 Battery Switch for Dual Batteries, Convenience Package, Spreader Lights, ITS Hard Top w/ Storage Box

TP 6 Battery Switch for Dual Batteries, Cockpit Bolsters, Cockpit Lights, Spreader Lights, ITS Hard Top w/ Storage Box

Note: Outriggers - Optional on All Tournament Packages

- Air Conditioner (12 V)
- Air Conditioner w/ Heater
- Anchor Roller w/ Cleat
- Battery Charger
- Battery Switch - On/Off
- Battery Switch for Dual Batteries
- Bow Cushion(s)
- Bow Cushion w/ Bolsters
- Bow Thruster
- Cabin Floor - Teak & Holly
- Cabin Floor - Teak & Holly w/ Cabin Steps
- Cabin Floor - Woodgrain (Laminated)
- Casting Platform
- Cockpit Bolsters
- Cockpit Lights
- Cockpit Shower - Fresh Water
- Cooler - Leaning Post
- Cooler w/ Cushion - Forward Console
- Curtain Package
- Dive Ladder (Removable)
- Dive Ladder (Removable) - Single Engine Only
- Electronic Throttle & Shift Controls (Twin)
- Fuel Tank Upgrade to 425 gal (In Lieu of Storage)
- Gauges - Digital (B&P, Honda, Mercury & Suzuki)
- Generator (Gas) 5.0 kw w/ Carbon Monoxide Detector & Auto Shut Off
- Generator (Gas) 7.0 kw w/ Carbon Monoxide Detector & Auto Shut Off
- Graphics - Hull - Onyx Black, Deep Blue, Shiraz, Glory Blue
- Head - Electric w/ Macerator, Holding Tank w/ Dockside & Direct Overboard Discharge
- Head - Overboard Discharge
- Head - Porta-Potti (Inside Console/Cabin)
- Head - Porta-Potti w/ Dockside Discharge
- Head - Vacuum Flush w/ Holding Tank & Direct Overboard Discharge
- Jack Plate - Hydraulic
- Leaning Post Backrest (Requires Leaning Post Baitwell)
- Light - Remote Spot (Requires Hard/T-Top)
- Lights - Docking

OPTION

Model	Air Conditioner (12 V)	Air Conditioner w/ Heater	Anchor Roller w/ Cleat	Battery Charger	Battery Switch - On/Off	Battery Switch for Dual Batteries	Bow Cushion(s)	Bow Cushion w/ Bolsters	Bow Thruster	Cabin Floor - Teak & Holly	Cabin Floor - Teak & Holly w/ Cabin Steps	Cabin Floor - Woodgrain (Laminated)	Casting Platform	Cockpit Bolsters	Cockpit Lights	Cockpit Shower - Fresh Water	Cooler - Leaning Post	Cooler w/ Cushion - Forward Console	Curtain Package	Dive Ladder (Removable)	Dive Ladder (Removable) - Single Engine Only	Electronic Throttle & Shift Controls (Twin)	Fuel Tank Upgrade to 425 gal (In Lieu of Storage)	Gauges - Digital (B&P, Honda, Mercury & Suzuki)	Generator (Gas) 5.0 kw w/ Carbon Monoxide Detector & Auto Shut Off	Generator (Gas) 7.0 kw w/ Carbon Monoxide Detector & Auto Shut Off	Graphics - Hull - Onyx Black, Deep Blue, Shiraz, Glory Blue	Head - Electric w/ Macerator, Holding Tank w/ Dockside & Direct Overboard Discharge	Head - Overboard Discharge	Head - Porta-Potti (Inside Console/Cabin)	Head - Porta-Potti w/ Dockside Discharge	Head - Vacuum Flush w/ Holding Tank & Direct Overboard Discharge	Jack Plate - Hydraulic	Leaning Post Backrest (Requires Leaning Post Baitwell)	Light - Remote Spot (Requires Hard/T-Top)	Lights - Docking			
20 Express																																							
20 Sport																																							
23 Bay																																							
23 Bay XS																																							
23 Dual Console																																							
23 Express																																							
23 Sport																																							
23 XP Pilot																																							
24 Super Sport																																							
26 Express																																							
26 Super Sport																																							
26 XP Pilot																																							
29 Express																																							
29 Grand Sport																																							
29 Super Sport																																							
32 Express																																							
35 Express																																							



Take a virtual tour or see video of all models at: www.prolineboats.com

Throughout its history, **Pro-Line** has set the industry standard for quality and dependability. We've built this consistency by perfecting a formula with no room for error, no tolerance for compromise. We know how to build boats the right way and for us, that's the only way.

Adaptation and Advantages

The blending of technological developments with industry trends will always necessitate change.

Pro-Line has proven its adaptability by delivering products that satisfy the boating industry's trends and preferences. From the workhorse **Dual Console** that we launched in 1968, to our modern offshore warrior – the **35 Express** – we've always given boaters what they request, but we've always maintained the superior quality and service that earns your business in the first place.

1. LAMINATION FIXATION



We laminate our hulls with a process and materials exceeding the requirements of Lloyd's Registry of Shipping. We apply laminates by hand for a flawless finish and squeegee excess resin to minimize weight and yield the proper resin-to-fiberglass ratio. Multi-axial fabrics improve laminate strength and overall sturdiness.

2. RESONATING RESIN



Only high-quality marine resin satisfies our demands for strength and cosmetics. We demand the best because we build the best.

3. COAT OF CLASS



High-quality ISO NPG gel coat finish provides durability and a long-lasting shine. Pro-Line applies 25 mils for strength while still maintaining flexibility and performance.

4. F.I.S.T. PACKS A PUNCH



Pro-Line's proprietary Fiberglass Integrated Structural Technology (FIST) provides the rock solid foundation for all of our boats. Pro-Line completely eliminates wood rot with fiberglass stringers that we laminate to the hull for a superior one-piece hull system. We also use high-tech coring material which means less weight and no water absorption. Only interior cabinetry is made of wood.

5. A CUT ABOVE



Fiberglass and coring materials are pre-cut and kitted for each boat to ensure quality and consistency. Attention to detail complements our precision processes.

6. UNBREAKABLE BONDS



A Pro-Line's hull-to-deck joint is bonded with an adhesive sealant and secured with stainless steel fasteners to provide a strong, water-tight union. The rub rail is secured through the deck and hull at pre-drilled intervals with sealed stainless steel fasteners. The bow area and transom are glassed together, and strong polyester putty bonds the deck to the stringers. This fortified process gives Pro-Line boats a solid 'one piece' construction that keeps you safe and comfortable on the water.

7. KEEP IT COOL AND LIVELY



Foam insulated fish boxes and coolers keep ice frozen longer, while insulated live wells maximize bait life. Such unseen elements bespeak Pro-Line's dedication to customer satisfaction.

8. LOCKED DOWN



Aircraft style lock nuts prevent loosening, while aluminum backing plates keep bolts in place even under heavy loads. Through-bolted stainless steel hardware yields maximum strength and solidity with a clean look for the life of your Pro-Line.

9. WIRED FOR SUCCESS



Pro-Line boats are rigged with top-quality, braided marine grade wire. Each connection is heat shrunk and sprayed to prevent corrosion. Sealed Deutsch Connectors are used for maximum corrosion protection, and all wiring is color coded to meet NMMA specifications.

10. COMMITMENT TO QUALITY

Long-term partnerships with suppliers ensure product consistency and reliable technical support. We don't shop by price – we shop to find the best materials for your Pro-Line.



STRONG PARTNERSHIPS

Dedication and Direction

Pro-Line's success story hinges on some of the boating industry's most talented and committed professionals.

Complementing our internal family, **Pro-Line** deeply appreciates the partnerships we've formed with some of the nation's leading companies, such as Bealls Department Stores, Inc., West Marine, Saturn and Universal Studios.

To purchase our full selection of **Pro-Line Boats** clothing and promotional products, visit: www.Pro-LineBoats.com. Visit www.BeallsFlorida.com for a large selection of swimwear, sportswear and fishing apparel, along with www.WestMarine.com to purchase marine gear, fishing and boating products seen throughout our 2008 catalog.



Take a virtual tour or see video of all models at: www.prolineboats.com

Official Boat
of Universal
Studios Orlando

www.prolineboats.com



800-344-1281 • P.O. Box 1348 • Crystal River, Florida 34423-1348