

# 26 XP

**PROLINE**

ProLineBoats.com • 800.344.1281

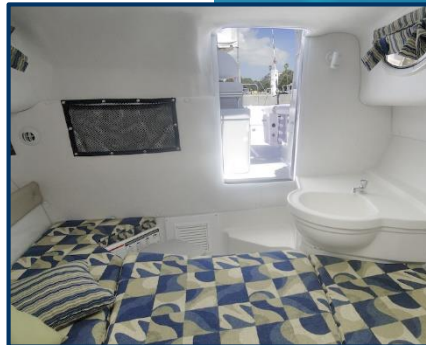
**Mercury**    250 Verado \*D  
                  300 Verado \*D  
                  Twin 150 4-Stroke \*M  
                  Twin 175 Verado \*D  
                  Twin 200 Verado \*D  
                  Twin 225 Verado \*D

**Suzuki**     250 4-Stroke \*D  
                  250 4-Stroke \*M  
                  300 4-Stroke \*D  
                  Twin 150 4-Stroke \*M  
                  Twin 175 4-Stroke \*M  
                  Twin 200 4-Stroke \*M  
                  Twin 225 4-Stroke \*M

*25" Shafts for Twin/30" for Single  
Shift & Throttle - \*M = Mechanical, \*D = Digital*



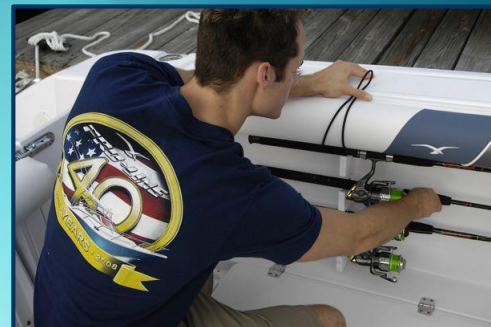
- Length . . . 26' 4"
- Beam . . . 8' 6"
- Draft (Hull) . . . 18"
- Deadrise . . . 22 deg
- Fuel . . . 187 gal
- Weight - Hull . . . 5,380 lbs
- Weight - Trailer . . . 8,240 lbs
- Cockpit Area . . . 58 sq ft
- Cockpit Depth . . . 27"
- Bridge Clearance . . . 9' 0"
- Max HP . . . 450
- Baitwell . . . 20 gal
- Fishbox (2) . . . 74 gal
- Fresh Water . . . 15 gal



While we endeavor to be as accurate as possible, certain changes in standard and optional equipment may occur. Also, specifications and performance figures are estimated and may vary with each vessel, application and conditions.

## Standard Equipment

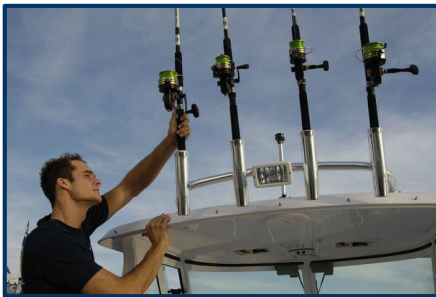
- 10 Year Hull Structure Warranty
- 12-Volt Receptacle
- ABYC Color Coded Wiring w/ Shrink Connections
- Anchor Roller
- Baitwell w/Raw Water Washdown & Light
- Base Vinyl - Off White w/Baseball Glove Leather Accents
- Battery Switch for Dual Batteries
- Battery(s) w/ Engine Selection
- Bilge Pumps (2) - Auto-Manual
- Bow Handrail - Stainless Steel
- Cabin Cushion(s)
- Cabin Door - Poly
- Cabin Hatch
- Cabin Lights
- Cabin Portholes
- Cabin Sink - Fresh Water
- Cabin Table w/Filler Cushion
- Cleats - 7
- Cockpit Bolsters
- Cockpit LED Lights
- Cockpit Shower - Cold
- Compass
- Composite Construction - Floors & Transom
- Dive Platform - Integrated w/Ladder
- Drink Holders - Stainless Steel
- Fiberglass Stringer System (Foam Filled)
- Fish Boxes w/Macerator
- Gunnel Trim - Rigid Vinyl w/ SS Insert
- Hand Laid Knitted Fiberglass Fabric (Hull Structure)
- Head - Porta-Potti
- Horn - Electric
- Light LED - Navigation
- Light LED - Spreader
- NMMA Certified
- Rod Holders - 2 Pair
- Rod Racks - Cockpit (8) Horizontal
- Rope Locker Storage
- Safety Engine Kill Switch w/ Motor
- Seating - Captains Chairs
- Seating - Folding Rear Bench
- Shrink Wrap
- Steering - Hydraulic
- Steering - Tilt Upgrade w/ Engine Selection
- Stereo - AM/FM w/ iPod, Bluetooth & 4 Speakers
- Storage - Tackle
- Storage - Under Captains Chairs
- Striping - Waterline
- Switch and Breaker Panel
- Top - Hard Top
- Transom Door
- Trim Tabs w/ Indicators
- Windshield - Tempered Glass
- Windshield Wiper - Starboard





## Optional Equipment

- CE Certification
- Curtain - Aft Enclosure
- Dive Ladder (Single Engine Only)
- Head - Porta-Potti w/Dockside Pumpout
- Light - Remote Spot
- Seating - Helm Bench w/Storage & Folding Bench
- Windlass w/Rope & Chain
- Windshield Wiper - Port



## Optional Packages

### Color Package - Hull Bottom Gel to Chine

- Black • Fighting Lady Yellow • Ice Blue • Navy Pro-Line Blue • Sand • Seafoam Green

### Color Package - Hull Sides Gel to Chine

- Black • Fighting Lady Yellow • Ice Blue • Navy Pro-Line Blue • Sand • Seafoam Green

### Electronics Package 2

- Garmin Striker 5
- Garmin GPS echoMAP 54DV
- VHF Radio - Garmin 200 w/ Antenna

### Electronics Package 3

- Garmin GPSMap 7608
- VHF Radio - Garmin 200 w/ Antenna
- \* Optional XM Weather
- \* Optional 1kw In-Hull Transducer

### Powdercoat Package

- Helm Seat & Top
- \* Black
- \* White

